



Slabs & Cabs

Volume 62

Number 11

November 2012

Howdy Rockhounds!

I look forward to Nov. and Thanksgiving Day when Donna and I get to spend time with our sons and their family and friends. Like many of you we have our Annual Thanksgiving Dinner, watch some football, play some games and reflect on our many blessings.

For me the blessings are many, including the fact that I am privileged to serve as President of Gulf Coast Gem and Mineral Society. I am thankful for members like you who support our Society's mission to promote interest and education in the earth sciences and in particular the subjects of mineralogy, paleontology, lapidary, geology and other related subjects.

As you reflect on your blessings, and the enjoyment of collecting minerals and fossils, and working on lapidary projects share that enthusiasm with others. Invite them to attend our meetings and hopefully your enthusiasm will encourage them to join and participate in the GCGMS events.

Speaking of events, a big thank you goes out to Allen Costello for his presentation on Ice Age Mammals during the Oct. meeting.

The December meeting Date will be Dec. 7, 2012 at the First Baptist Church Recreation Hall. The 2013 slate of officers will be installed followed by a potluck dinner. Please join us for a fun time of good food and fellowship.

In a short 4 months we will have our 51st Annual Gem and Mineral Show. It is a busy weekend, and we appreciate all the time and effort you each put in to make it a success.

SILVER is the color for the Nov. meeting. Bring any silver colored minerals you would like to display on the "It certainly is exquisite, but what the dickens is It." table. Also there will be a prize for the best silver outfit!

INSIDE

Presidents Message _____	Pg 1
Club News and Information _____	Pg 2
Birthstone _____	Pg 3
Regular Meeting Minutes _____	Pg 4
Board Meeting Minutes _____	Pg 5
Shop Keys & Rules _____	Pg 6
Commung Events _____	Pg 7
AFMS _____	Pg 8
Kids Corner _____	Pg 9
Last Page _____	Pg 10

Looking forward to seeing you **Tuesday**
November 27th.

Joe

Birthstone - Traditional

*Who first comes to this world below
With drear November's fog and snow,
Should prize the topaz's amber hue,
Emblem of friends and lovers true.*

2012 Board

President
Joe Grimes

Vice-President
Jerrold Simpson

Past President
Kevin Schleicher

Secretary
Gilbert Trejo

Treasurer / Web master
Gene Schade

Membership / Newsletter
Sylvia Kernen, newsletter@gcgms.org

Education
open position

Librarian
Linda Simpson

Show / Dealer Chair
Jerrold Simpson

Show Publicity
Donna Grimes

Shop Coordinator:
Mark Wolbrink

Field Trip Coordinator
open position

Federation Liaison
Joe Grimes

Historian
open position

Communications
Suzy Nick

Door Prizes
Michelle Alvarez

Refreshment Hostess
Letty Rodriguez

Club News & Information

Our last general meeting had some real beauties attending. We were asked to 'show off' our gold colors at the meeting. Victoria Longo beat everybody and won the title 'golden girl'. She received a pyrite as prize.



We also had a treat ... our guest speaker was Alan Castello who gave an interesting presentation on climate induced sea level changes along the gulf coast and why we find certain fossils in this area. Thank you Mr. Castello for taking the time to speak to us.



A special Happy Birthday to Mr. Fred Blackmar on his 80th Birthday!

- | | | |
|-----|-----------------|----------------|
| to: | Travis Carver | Reagan Carver |
| | Efrain Franco | Butch Harris |
| | Anne Haldorf | Grace Hooten |
| | Rosaline Juarez | Chuck Paradise |
| | Gene Schade | Vicki Watson |
| | Jeff Watson | |

and all members born in November! Please send me your birthdate information, so you can be mentioned as well. newsletter@gcgms.org



Welcome!

A warm welcome goes out to our new member Susan Fest.

REMEMBER!

There will be **NO** monthly meeting in December. The **Christmas Party on December 7th** is our monthly meeting in December! More info about the party will follow in a separate email.

Jerrold and Linda Simpson were presented with the Rock Hound of the year for their continuous efforts to educate our youth and for all their work for the club. Congratulations Linda and Jerrold and THANK YOU!



Linda and Jerrold with their award

Birthstone for November - Citrine

Citrine

November Birthstone : Citrine

Birthstone Color: Yellow Gold

November's gemstone, Citrine, is as warm as a Van Gogh painting of sunflowers. The name Citrine comes from an old French word, "citrin," meaning lemon. One of the more rare forms of quartz, this gemstone ranges in color from the palest yellow to a dark amber named Madeira because of its resemblance to the red wine.

Perhaps because of its scarcity, there is little mention of Citrine used as a gemstone prior to the first century B.C. The Romans were thought to be the first to wear the yellow quartz, crafting it into cabochon, or highly polished but unfaceted cuts of stone set into jewelry. Citrine became more popular during the Romantic Period, when artisans often favored these warm colored gems to enhance gold jewelry. Citrine, like all forms of quartz, was believed to have magical powers and was

worn as a talisman against evil thoughts and snake venom. It was also considered to have medicinal properties and was commonly used as a remedy for urinary and kidney ailments.



A gift of Citrine is symbolic for hope and strength. With its sunny brightness, this gemstone is ideal for helping anyone to get through the tough times in life!

Alternate Birthstone

Yellow Topaz is an alternate gemstone for those born in November. Its golden color was believed by the Egyptians to be the glow cast by the sun god Ra. Yellow Topaz ranges in color from a peachy blush to a deep cognac. A gift of this gemstone is said to symbolize friendship and to strengthen one's capacity to give and receive love.

Sister stone to the purple quartz known as Amethyst, Citrine crystals are found in igneous metamorphic and sedimentary rocks. It is believed that some Citrine may have actually begun as Amethyst, but heat from nearby molten rock changed it to the yellow form of quartz. Citrine is known to change color when subjected to heat and is routinely heated in the jewelry-making process to intensify its color. For this same reason, though, this gemstone should not be left in direct sunlight for a long time because it will permanently alter the color. Most Citrine is mined in Brazil, but other sources of the quartz are Bolivia and Madagascar.



Source: <http://www.about-birthstones.com/novemberbirthstone.html> and wikipedia.com



Amethyst surrounded by Citrine

Regular Meeting 16 October 2012

of the Gulf Coast Gem & Mineral Society

The GCGMS Regular Meeting for 10-16-12 was called to order by President Joe Grimes at 6:58pm. The meeting was held at the Corpus Christi Museum.

Gene Schade gave the Treasurer Report he sent. Gene went over the income and expense items and gave the balance of the bank account.

Gilbert Trejo said there were not any changes to the Secretary Report.

Sylvia Kernan gave the Membership Report. She said there are 128 adult members and 32 junior members and 9 honorary members.

Mark Wolbrink gave the shop report. He said that they have gotten the last of the rock

collection. Mark said he would like to have a Saturday Rock sale some weekend. Mark also said that the shop will be closed this Saturday because of the Austin and Victoria rock shows.

Butch Harris made a motion seconded by Kevin Schleicher to accept all the reports. All voted aye.

Under old business Gene Schade went over the board positions. He said the Hank Swan has volunteered to be run for Treasurer. He stated that Joe Grimes as President, Jerrold Simpson as Vice President and Gilbert Trejo as Secretary have agreed to run for office again.

Under new business, Joe Grimes said that Linda and Jerrold Simpson have been important members of

the club for many years and make many contributions to the club and have been nominated and been selected as Rockhounds of the Year. Joe Grimes presented Linda and Jerrold with Certificates of Recognition.

Hank Swan said that he was starting a precious metal clay class. He said to call him and his phone number is in the newsletter.

The color for this month was gold. Everyone with gold colored clothes or jewelry came to the front. Victoria Longo was judged to have the best gold clothes and jewelry.

Kevin Schleicher makes a motion to adjourn seconded by Hank Swan. The motion passed.

Mystery Fossil



Could this fossil be a plant? It appears to have a stalk or stem. But it used that stalk to anchor itself to the sea floor, not to hold leaves up to the sun. There aren't many living today. Do you know what it is?

Did you guess correctly?

Source: University of California Museum of Paleontology
<http://www.ucmp.berkeley.edu/>

Board Meeting 08 November 2012

of the Gulf Coast Gem & Mineral Society

The GCGMS Board Meeting for 11-8-12 was called to order by President Joe Grimes at 6:31 pm. The meeting was held at the Society Lapidary Shop. Those in attendance were Joe Grimes, Donna Grimes, Gene Schade, Mark Wolbrink, Kevin Schleicher, Sylvia Kernen and Gilbert Trejo.

Gene Schade gave the Treasurer's Report. Gene goes over the expenses for the 2013 Rock Show. Kevin Schleicher made a motion to accept the report, seconded by Mark Wolbrink. All voted aye.

Gilbert Trejo gave the Secretary Report. He said there were no corrections. Gene Schade asked if the motion on the due date of the next scholarships was December 15th since he has sent out the scholarship applications the due date was listed as December 31st. Joe Grimes said we will discuss this under old business. Mark Wolbrink made a motion to accept the report seconded by Gene Schade. All voted aye.

Mark Wolbrink gave the shop report. Mark said that shop activities are down. Mark said that the shop equipment is running okay. Mark stated he would like to have a date for a rock sale. The discussion was to have the sale later. Kevin Schleicher made a motion to accept the report, seconded by Sylvia Kernen. All voted aye.

Sylvia Kernen gave the membership report. Mark Wolbrink made a motion to accept the membership report, seconded by Kevin Schleicher. All voted aye.

Joe Grimes gave the Show Report. Jerrold Simpson was not present but he sent a written report. Joe

Grimes said that there were 19 dealers. Jerrold said that he would contact the other dealers this weekend.

Donna Grimes said that the tickets for the show will be available at the Christmas party. Sylvia Kernen brought in posters for review. Mark Wolbrink made a motion to accept the Show Report and the Show Advertising Reports, seconded by Donna Grimes. All vote aye.

Joe Grimes said there is no field trip chairman report.

Under old business, the nominating committee report was given by Gene Schade who said the existing members of Joe Grimes as President, Jerrod Simpson as Vice President and Gilbert Trejo as Secretary have agreed to run again and Hank Swan has been nominated as Treasurer. Kevin Schleicher made a motion to accept the nominating committees' recommendation seconded by Mark Wolbrink. All voted aye.

Gene Schade said he has had responses from Del Mar and TAMUCC on the next scholarship. He said the applications are to be to us by December 31st. Gene Schade made a motion to have applications for scholarship due by December 31st, seconded by Donna Grimes. All voted aye.

The posters for the next Rock Show were presented and will be ready at the Christmas party.

There was a discussion on the type of vendor table setups and price. Mark Wolbrink made a motion to not have a table fee rate change for the 2013 Rock Show, seconded by Donna Grimes. All voted aye.

The new logo for the club was presented by Sylvia Kernen. The board discussed any changes that may be needed if t-shirts or mugs would be printed. Sylvia said that changes to do other print jobs would be easy. Gene Schade made a motion to accept the logo, seconded by Donna Grimes. All voted aye.

Under new business, Russell Wheeler will do the next meetings presentation on Families of Minerals.

Gene Schade reads an e-mail from a metal detector who will donate two gift certificates if we allow him to put a link on our web site to his company. Gene Schade makes a motion not to accept this link to our web site, seconded by Kevin Schleicher. All voted aye.

Joe Grimes asks that Gene Schade and Sylvia Kernen review the links on our website.

A notice was received that Fossil Fest will be held on December 1st and 2nd. Kevin Schleicher made a motion to send this notice in our newsletter and ask that they advertise our next Rock Show, seconded by Mark Wolbrink. All voted aye.

Kevin Schleicher made a motion to adjourn at 8:18 pm, seconded by Donna Grimes. The motion passed.

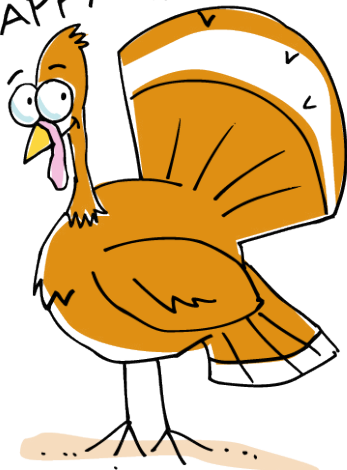
*Christmas Party is on December 7th
There will be NO General Meeting in December!*

Lapidary Shop Rules

1. The lapidary shop equipment may not be used by anyone who has not signed a liability waiver.
2. Shop equipment use flat fee is \$2.00 per hour. Sign in on arrival. Pay Supervisor and sign out before leaving the shop.
3. "Open shop" hours are to be used only by those who have taken the cabochon class or have shown proficiency on the equipment.
4. All children under the age of 17 must be accompanied by an adult trained on the use of the equipment.
5. Supervisor must inspect rock "set-up" prior to anyone starting slab saw.
6. Long hair should be tied back, loose sleeve should be secured, and safety procedures followed.
7. Safety glasses are recommended and are the responsibility of the individual. Some are furnished by the GCGMS, or you may bring your own.
8. The last person to use a piece of equipment before the shop closes is responsible for cleaning that piece of equipment and the work area. This may include tabletop, sponges, aprons, catch trays, etc.
9. Shop Supervisor is the final authority on shop rules and usage.

Revised May 2009

HAPPY THANKSGIVING!



I'm thankful for Vegetarians!

Lapidary Shop Keys

Lapidary Shop key masters are:

Shop Supervisor:
Mark Wolbrink 361-991-2495

Jerrold Simpson
361-851-8788 / Cell - 361-877-3073

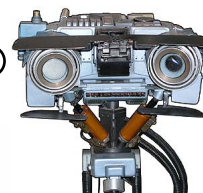
Hank Swan 361-993-9861/361-857-2405



Please call one of these when you would like to use the shop. They will not all be available at the same time, and once in a while none of them will be available most of the time at least one of them should be able to work out a time and date the shop could be open for you. Remember the club has a lot of good equipment to use.

Several different classes are being conducted on Monday evening from 6:00pm to 9:00pm. The shop is open during these times for use of the equipment even if you are not involved in a class. Shop is also open Saturday 9:00 Until Noon.

Need Input!



WANTED:

Newsletter Contributions

If you went on a field trip, would like to share information about gems and minerals, or have any information (articles, minutes, ideas) for the newsletter, please email them to Sylvia: Newsletter@gcgms.org by the first Thursday morning 9:00 am. of every month.

Upcoming Events

November 2012

Nov 9-11 HUMBLE, TX

Annual show; Houston Gem & Mineral Society; Humble Civic Center; 8233 Will Clayton Pkwy.; Fri. 9-6, Sat. 9-6, Sun. 10-5; adults \$7, seniors and students \$6, children (under 12) free; contact Sigrid Stewart, (281) 530-0942; email: sigrid.stewart@gmail.com; www.hgms.org

**Nov 30-
Dec 2****EL PASO, TX**

Annual show; El Paso Mineral & Gem Society; El Maida Shrine Auditorium; 6331 Alabama; Fri. 10-6, Sat. 10-6, Sun. 10-5; contact Jeannette Carrillo, 4100 Alameda Ave., El Paso, TX 79905, (915) 533-7153; e-mail: gemcenter@aol.com

December 2012

Dec 1-2 ROUND ROCK, TX

22nd Annual Fossil Fest: Paleontological Society of Austin; Old Settler's Heritage Association (inside), next to the Dell Diamond on Highway 79, 3 miles east of IH-35; \$3/adult, \$2/child (6-12), children under 6 free; contact Suzanne Gallagher, showchairaustinpaleo.org; website: www.austinpaleo.org

January 2013

Jan 19-20 FREDERICKSBURG, TX

Annual show; Fredericksburg Rockhounds; Lady Bird Johnson Municipal Park; Pioneer Pavilion, 1601 S. Hwy. 16; Sat. 9-6, Sun. 10-5; free admission; hourly door prizes, fossils, geodes, exotic minerals, meteorites, gems, jewelry, findings, "mystery" rock identification; contact Jeff or Brenda Smith, 208 Castle Pines Dr., Kerrville, TX 78028; e-mail: jeffbrenda@ktc.com; Web site: fredericksburgrockhounds.org

Jan 25-27 TYLER, TX

Annual show; East Texas Gem & Mineral Society; Tyler Rose Garden Center; 420 Rose Park Dr.; Fri. 9-5, Sat. 10-6, Sun. 10-5; adults \$3, students \$1, Scouts in uniform free; contact Keith Harmon, 8316 Oxford Dr., Tyler, TX 75703, (903) 581-4068; e-mail: keithharmon19@yahoo.com

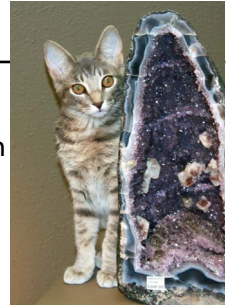


AFMS Land Use Policy

1. Adherence to the AFMS Code of Ethics assures compliance with most statutes and regulations governing collecting on public lands and encourages respect for private property rights and the environment. Clubs are urged to read the AFMS Code of Ethics in at least one meeting every year, to publish the Code frequently in the club newsletter, and to compel compliance on club field trips.
2. Individuals and clubs are urged to write their elected representatives and land use management agency supervisors regarding issues of rule making, legislation and enforcement affecting field collecting of minerals and fossils.
3. Individuals and clubs are urged to join and support activities of the American Lands Access Association (ALAA), a sister organization with responsibility for advancing the interests of earth science amateurs with legislatures and land use management agencies.
4. The AFMS will receive a report from ALAA at its annual meeting.
5. The AFMS endorses the principle of multiple use of public lands as a guarantee of continuing recreational opportunities.
6. Wilderness and monument designations are inconsistent with the principle of multiple use. In view of the vast amount of public land already designated as wilderness and monuments, future such designations should be minimal, taking into account the increased demand for recreational opportunities, including rockhounding, created by a growing population.
7. In furtherance of the principle of multiple use, the AFMS believes that laws, regulations and rules established by relevant governmental authorities should be designed to allow freest possible access to all public lands, coupled with minimal restrictions on the recreational collection of minerals, fossils, gemstone materials and other naturally occurring materials.
8. A right to collect minerals and fossils on public lands should be protected by statute.
9. The AFMS urges its members to work with any or all government authorities to achieve a good working relationship in order to improve the "Public Image" of recreational collectors.

Melody

Hi! My name is Melody. You may remember me as the rock-kitty from the lapidary shop one year ago. Yes, November 1st was the anniversary of when I adopted one of the rockhounds after a board meeting. I've grown from 4 pounds to 11 pounds and haven't missed any meals lately. Although playing on the rocks outside the shop was fun, I have now become a big fan of pearls at my new workplace. There is a problem with some of my co-workers. They sometimes don't agree with the way I arrange things in the showcases. They take me out of the case and won't allow me back in. So I find other things to stay busy. There once was a big bald eagle with wingspread of 3 feet that looked pretty dangerous. So I killed it. Now it's just a pile of onyx, quartz, calcite and pyrite. I just love visiting with customers when they come in the store. Even when someone else is assisting them I try to walk down the counter so they know I'm happy to see them. I could do without Micki the cat that stays here but apparently she is not going away. She has to stay here at night while I go home. This reminds me it's almost time to close up shop. Sometimes I play a game at this time of day called "Catch me if you can". I just wanted to bring you up to date on life at Casa de Oro. Come see me if you get a chance.



Kids Corner Rocks

All about Rocks

FASCINATING FACTS

The heads at Mt. Rushmore are carved out of an igneous rock called granite. The heat of lightning striking the sand of a beach can melt the sand to form a glassy rock called "fulgurite." Don't miss the amazing crystals at the Smithsonian Gem & Mineral Collection.



Melted rock is called magma when it is inside the earth, but called lava when it runs out onto the surface of the earth. The mineral, salt, was so valuable in ancient times that it was traded ounce for ounce for gold. A diamond is the hardest mineral. Meteorites are rocks from space and they can help scientists learn about the solar system.

source: copyright D4K, Idaho Public Television
<http://idahoptv.org/dialogue4kids/season9/rocksminerals/facts.cfm#start>

Rock & Fossils Word Search

E A H U S N O E F Z L L S T
 N M H O A Z A M O L S B N W
 S H P T Q E L V A P P L E O
 O R D O E F V S R G S A E I
 Q F W G T S A T V Z M C N E
 E S U T E T S C G R W A Z O
 U A E L S T L C T U B R D O
 R T H I G E E H E S G V N C
 F C Z G P U G S E H H E Y Z
 V M H H R S R N E M S D L E
 S V M T N T S I Q O I A M P
 O T R N I S G S T R R N N W
 O E M I M A R N I E E R S O
 V T E N C L Y W N L I N F E
 C X J G I T I I N A E G E E
 D R E D I A M O N D H I E S

- | | |
|-----------|---------|
| facts | magma |
| rushmore | mineral |
| carved | salt |
| lightning | diamond |
| fulgurite | |



Q: Did the dinosaur take a bath?
 A: Why, is there one missing?



Check out some Cool Kids Links

- <http://www.kidsgeo.com>
- <http://www.rocksforkids.com>
- <http://earthquake.usgs.gov/learn/kids/>
- <http://www.bbc.co.uk/nature/fossils>
- <http://www.abc.net.au/beasts/fossilfun/>
- http://www.bbc.co.uk/sn/prehistoric_life/games/
- <http://www.oum.ox.ac.uk/thezone/fossils/inverts>
- <http://www.oum.ox.ac.uk/thezone/rocks/index>

MEMBER of

American Federation of Mineralogical Societies



South Central Federation of Mineral Societies, Inc.



Meeting

Held the **third Tuesday** of each month at **6:30 pm** at the museum of Science & History, 1900 North Chaparral September through May, and at the Lapidary Shop, 3933 Timon Blvd., Corpus Christi TX for **June through August**.

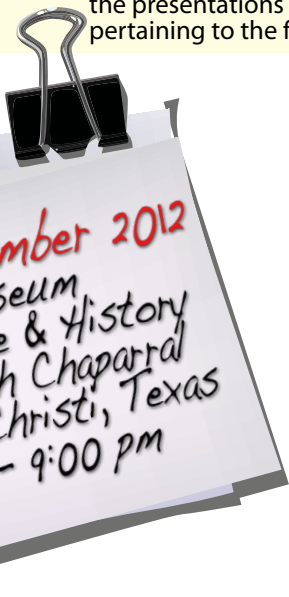
Membership Fees

Annual fees: Individuals \$15.00, Couples \$20.00, Junior (under17) \$5.00

Purpose

The objective and purpose of the society is to disseminate knowledge of mineralogy, the earth sciences and the lapidary arts. To encourage study in these subjects through the means of: presentation of public exhibitions, field trips for exploration, study and collection of specimens, the presentations of lectures, illustrated programs, demonstrations and similar programs pertaining to the fields of mineralogy, earth sciences and the lapidary arts.

Mark your calendars!



WWW Visit us on our website www.gcgms.org



we are also on Facebook, come and 'like' us on there as well!

Next board meeting
4 December 2012
at the Lapidary Shop
6:30 pm - 9:00 pm

Slabs & Cabs
Sylvia Kernen
3942 FM 1781
Rockport TX 78382

Slabs & Cabs Awards



2003 SCFMS
Small Bulletins 4th place

PUBLICATION

2002 2nd
2001 1st
2001-4th place AFMS
2000 9th place SCFMS
1999-8th place SCFMS
1999- 9th place (new editor) AFMS

Permission is granted to use any article in this publication, provided proper credit is given.