



# Club News and Information

## *Congratulations*

Our Winner for last months meeting color contest was **Norma Trejo**



It was not easy to choose, there were so many wonderfully green colored contestants. Thank you all for participating!  
Norma received a green peacock marble stone.

## **Show Prize Winner**



We were also able to present the lovely peacock marble vase to our Show prize winner **Ms. Marissa Telge**

---

## *Thank you*

A big **Thank You** goes out to Dee Schade. She volunteered to give her presentation about the meaning of Gemstones at the last general meeting. Dee captivated the audience with her wealth of information and her wonderful way of presenting the topic. She also prepared a short quiz identifying Birthstones she brought along.



# Club News and Information

## Happy Birthday!

A very happy birthday to:

- 4<sup>th</sup> Suzy Nick
- 5<sup>th</sup> Fred Blackmar
- 13<sup>th</sup> Jennifer Carver
- 14<sup>th</sup> Lois Pattillo
- 17<sup>th</sup> Patsy Paradis
- 21<sup>st</sup> Agnes Marie Herschbach



and all members born in April! Please send me your birthdate information, so you can be mentioned as well. [newsletter@gcgms.org](mailto:newsletter@gcgms.org)

## Library

Linda is doing a wonderful job getting our Library up to speed. Come and check out some magazines or books about rocks and minerals. The Library is located in the Lapidary Shop.

## Field Trip

Please step forward if you know of a good place to go on a rock hunting field trip.

## Newsletter

If you went on a field trip, would like to share information about gems and minerals, or have any information (articles, minutes, ideas) for the newsletter, please email them to Sylvia: [Newsletter@gcgms.org](mailto:Newsletter@gcgms.org) by the first Thursday morning 9:00 a.m. of every month.

## Web Site



Come and check out the new website! Gene and Sylvia worked hard - and are still at it - to make the new site look nice and have the information our members and potential members need and want. It is a work in progress and if you have any input you would like to share let Gene Schade know.

## History

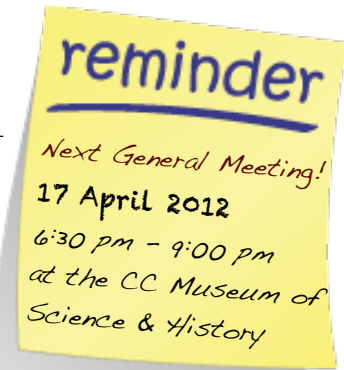
by Jerrold Simpson

Warren Rees, on the left, and Richard Cline, on the right, were recently in the lapidary shop discussing their adventures over the years while traveling the world collecting rocks and minerals.

Dick is a charter member of the Gulf Coast Gem & Mineral Society that was formed in 1953. He is a master at lapidary and has won several national awards through different federations. Dick's wife was also an award winner for her lapidary pieces.

Warren came to Corpus Christi in 1962 and became a member of the Society that year. He is also a national award winner for his lapidary work and jade carving. For many years Warren demonstrated his carving talents at the annual Gem & Mineral Show. Warren's wife designed the Paleo Indians that are on display at the Corpus Christi Science & History Museum.

Both Dick and Warren have donated 30 years of lapidary magazines to our library which is housed in the Lapidary Shop on North Beach.



# April Birthstone

## Diamond

*info: [Wikipedia](#)*

### Gemstone:

Diamonds (from the ancient Greek ἀδάμας – *adámas*, meaning "unbreakable," "proper," or "unalterable") is one of the best-known and most sought-after gemstones have been known to mankind and used as decorative items since ancient times; some of the earliest references can be traced to India.

The hardness of diamond and its high dispersion of light – giving the diamond its characteristic "fire" – make it useful for industrial applications and desirable as jewelry. Diamonds are such a highly traded commodity that multiple organizations have been created for grading and certifying them based on the four Cs, which are carat, cut, color, and clarity. Other characteristics, such as presence or lack of fluorescence, also affect the desirability and thus the value of a diamond used for jewelry.

Perhaps the most famous use of the diamond in jewelry is in engagement rings, which became popular in the early to mid 20th century due to an advertising campaign by the De Beers company, though diamond rings have been used to symbolize engagements since at least the 15th century. The diamond's high value has also been the driving force behind dictators and revolutionary entities, especially in Africa, using slave and child labor to mine blood diamonds to fund conflicts.

### Mineralogy:

In mineralogy, diamond is an allotrope of carbon, where the carbon atoms are arranged in a variation of the face-centered cubic crystal structure called a diamond lattice. Diamond is less stable than graphite, but the conversion rate from diamond to graphite is negligible at ambient conditions. Diamond is renowned as a material with superlative physical qualities, most of which originate from the strong covalent bonding between its atoms. In particular, diamond has the highest hardness and thermal conductivity of any bulk material. Those properties determine the



major industrial application of diamond in cutting and polishing tools and the scientific applications in diamond knives and diamond anvil cells.

Diamond has remarkable optical characteristics. Because of its extremely rigid lattice, it can be contaminated by very few types of impurities, such as boron and nitrogen.

Combined with wide transparency, this results in the clear, colorless appearance of most natural diamonds. Small amounts of defects or impurities (about one per million of lattice atoms) color diamond blue (boron), yellow (nitrogen), brown (lattice defects), green (radiation exposure), purple, pink, orange or red. Diamond also has relatively high optical dispersion (ability to disperse light of different colors), which results in its characteristic luster. Excellent optical and mechanical properties, combined with efficient marketing, make diamond the most popular gemstone.

Most natural diamonds are formed at high temperature and pressure at depths of 140 to 190 kilometers (87 to 120 mi) in the Earth mantle. Carbon-containing minerals provide the carbon source, and the growth occurs over periods from 1 billion to 3.3 billion years (25% to 75% of the age of the Earth). Diamonds are brought close to the Earth surface through deep volcanic eruptions by a magma, which cools into igneous rocks known as kimberlites and lamproites. Diamonds can also be produced synthetically in a high-pressure high-temperature process which approximately simulates the conditions in the Earth mantle. An alternative, and completely different growth technique is chemical vapor deposition (CVD). Several non-diamond materials, which include cubic zirconia and silicon carbide and are often called diamond simulants, resemble diamond in appearance and many properties. Special gemological techniques have been developed to distinguish natural and synthetic diamonds and diamond simulants.

# Kids Corner

## Rocks

### About Fossils

#### What are the Earliest fossils?

Earth is about 4.6 billion years old.  
 The oldest known fossils are from rocks from about 3.5 billion years ago.  
 At Shark Bay, Australia you can see stromatolites – literally layered rocks, which are examples of what the earliest life on earth looked like.

Check out this great facts sheet about stromatolites of Shark Bay: <http://www.sharkbay.org/default.aspx?WebPageID=228>



source: copyright D4K, Idaho Public Television  
<http://idahoptv.org/dialogue4kids/season6/fossils/facts.cfm>

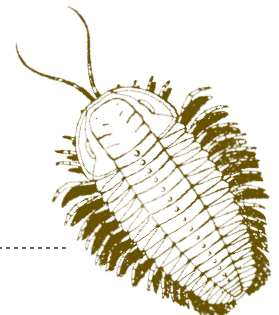
#### Rock & Fossils Word Search

S C E Y S Z S N O E S R O V  
 E P R L M S L W E A V B Q S  
 S N A O W Q J D S E A I R T  
 N O R R D U N R E F S R D Z  
 Y J X N L A T O O U Q I K B  
 S I O S S R E V I J X P G S  
 W F X Z I T E L V D C N Q A  
 V C Z D R Z Z R F D E N R A  
 W R D F A S Q P A L E A P O  
 L Y K S R G X F E O S O I L  
 V S T Z E R E G E F U P G Z  
 L T M U F O I D E G S S N L  
 M A G M A I H L P T R O E G  
 E L V G A A N G N F F M O A  
 R S P A Y Y N A H E C E U N  
 H V B G O G R D I V X K S P

- |          |         |
|----------|---------|
| crystals | dirt    |
| quartz   | magma   |
| soil     | lava    |
| sand     | igneous |



Q: What makes more noise than a dinosaur?  
 A: Two dinosaurs!



#### CHECK OUT SOME COOL KIDS LINKS



- [KidsGeo.com](http://KidsGeo.com)
- [Rocksforkids.com](http://Rocksforkids.com)
- [Earthquakes for kids](http://Earthquakes for kids)
- [BBC fossils](http://BBC fossils)
- [BBC walking with beasts](http://BBC walking with beasts)
- [BBC prehistoric life games and puzzles](http://BBC prehistoric life games and puzzles)
- [Oxford University Museum about fossils](http://Oxford University Museum about fossils)
- [Oxford University Museum about rocks](http://Oxford University Museum about rocks)

# Coming Events

April 2012

**14 - 15**

**ABILENE, TX**

Central TX G&MS Abilene Civic Ctr. North 6th & Pine, Saturday 10am-6pm, Sunday 10am to 5pm, Admission: Adults: \$3, Children 6-12y: \$1.50, Children 0-5 free with adult. Silent auction, wheel of fortune, geodes, grand prize. [www.rockclub.txol.net](http://www.rockclub.txol.net)

**20 - 22**

**ALPINE, TX**

Chihuahua Desert G&MS Alpine Civic Ctr. Hwy 90 W. & 13th St. N, free Admission, Grand Prize and more, Silent Auction, Demos, Friday is Kids day. Friday: 9am - 6pm, Saturday 9am - 6pm, Sunday 10am - 4pm, contact: Mary Brogan 432-386-2340, [Marybrogan@rocketmail.com](mailto:Marybrogan@rocketmail.com).

**28 - 29**

**LUBBOCK, TX**

Lubbock G&MS, Lubbock Civic Ctr., 54th Annual Gem and Mineral, Fossil and Jewelry Show and Sale, Lubbock Memorial Civic Center, Sat. 10am - 6pm, Sun 10am - 5pm, Admission: \$4, Students 6-12y \$2, Seniors \$3, Children under 6y are free. 50cents off adult admission with [flyer](#). website: [www.lubbockgemandmineral.org](http://www.lubbockgemandmineral.org)



**Volunteering** *Call for Volunteers!*

The GCGMS is and always has been run entirely on the good will of volunteers. Our success is based on those volunteers and our future depends on it. Most of our positions require only a little of your time each month, some less than that! Joining the committee is a rewarding experience. We have the following volunteer opportunities available:

- ✓ Education
- ✓ Field Trips
- ✓ Membership

Email any board member for more information.



# Safety

*by Jerrold Simpson*

We all know to keep our eye out for snakes, mosquito's, things to trip on and traffic. In our area we seldom have the surprise I recently had on a field trip to Choke Canyon Lake.

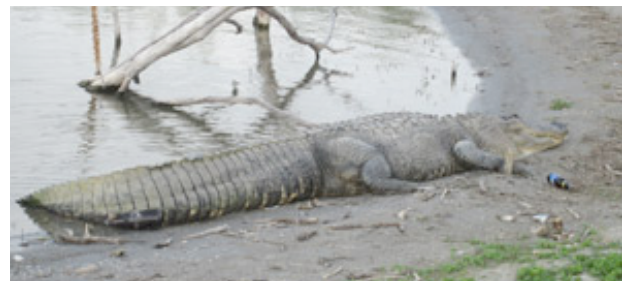
There is a boat dock about 8 miles east of Tilden, TX on highway 72. I was working up in that area recently and went to the boat dock because I knew the water would be low.

Linda was with me. Because it was a steep grade down to the edge of the lake, Linda stayed in the car, under the shade, reading her book. I walked down to the edge of the water and turned to my right to start looking for anything I could find in the way of rocks or fossils. I had walked to a point where I had to go back up a small inlet.

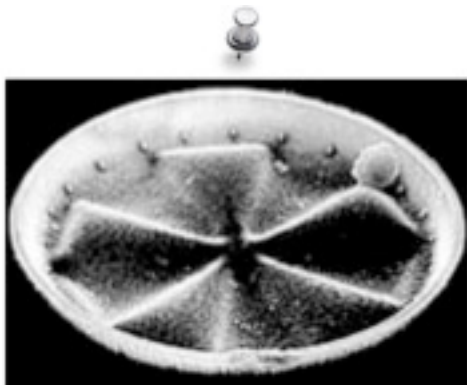
I was searching but not finding anything and being careful on the rough rocks. I was keeping my eye out for snakes, keeping a close eye on the ground. At one point I looked up to check the terrain ahead of me. I stopped dead in my tracks. About 20 feet in front of me was the alligator in the photos.

We recently took a trip to the Everglades in South Florida. I saw a lot of gators but very few the size of this one. He looks to be about 12' long.

So when you go on your next field trip, especially near water, add alligators to your list of things to keep an eye out for besides the treasures you are looking for.



# Mystery Fossil



Though the first specimens of this group appeared in the Lower Cretaceous, they are most often found in rocks of Eocene and Miocene age. These handy fossils are used today in cleansers, paints, filtering agents, abrasives...and even toothpastes! But they're not extinct—in fact they are among the most important aquatic microorganisms living today.

**Did you guess correctly?**

# General Meeting Minutes 20 March 2012

## of the Gulf Coast Gem & Mineral Society

The GCGMS Regular Meeting for 03-20-12 was called to order by President Joe Grimes at 7:03 pm. The meeting was held at the Corpus Christi Museum.

Gene Schade gave the Treasurer's Report. He stated that the show brought in a little less than last year and should make a 6,000 dollar profit. Linda Simpson made a motion to accept the Treasurers Report seconded by Bill Pattillo. The motion passed.

Sylvia Kernen gave the Membership Report. There are 27 new adult members, 7 new junior members. Art Worley made a motion to accept the Membership report seconded by Bill Pattillo. The motion passed.

Jerrold Simpson gave the Shop Report since Mark Wolbrink was absent.

Joe Grimes asked if there were any changes to the minutes. Jerrold Simpson made a motion to accept the minutes of the last meetings. Dick Cline seconded it. The motion passed.

Under old business, Kevin Schleicher introduced Linda Simpson to talk about the Kids Camp. She has been collecting materials and arranging activities. There are 18 applicants. Linda said she has contacted the museum as to the dates available which are June 13 to June 16. Linda went over activities that are planned.

Jerrold Simpson gave the Show Report. He said that there were 1,504 paid at the door tickets, 70 pre-sale tickets and 97 complimentary tickets for a total of 1,671 attended. He said the dealers were happy and he informed them of the date for next year's show.

Under new business, Jerrold Simpson said that years ago we had persons who would do demonstrations and would identify rocks at the Rock Show. He said he is looking for persons to do this at future shows. Joe Grimes said he had been contacted by a man who does demonstrations of sluicing with a self-contained unit at shows.

Linda Simpson went over the Federation newsletter. She mentioned the article about the

sphere donated to the Federation auction, a poem by Bill Pattillo and a report of the first Owen Hopkins Rock Camp by Sylvia Kernen.

Donna Grimes made a motion to adjourn at 8:20 pm seconded by Kevin Schleicher. The motion passed.

The contest for a green outfit was won by Norma Trejo. She received a green peacock marble rock.





# Board Meeting Minutes 06 April 2012

## of the Gulf Coast Gem & Mineral Society

The GCGMS Board Meeting for 04-03-12 was called to order by President Joe Grimes at 6:39 pm. The meeting was held at the Society Lapidary Shop. Those in attendance were Joe Grimes, Donna Grimes, Gene Schade, Mark Wolbrink, Sylvia Kernen, Jerrold Simpson, Linda Simpson and Gilbert Trejo.

Gene Schade gave the Treasurer's Report. Gene stated that he did not have the final figures for the report and Joe Grimes said we would hold off on this report until the next meeting. Gene went over the revenue and expenses for the Rock Show and said that some of the mail out and printing expenses are not in.

Sylvia Kernen gave the Membership Report. There are 99 adult members, 24 junior members and 9 honorary members for a total of 132 members. Jerrold Simpson made a motion to accept the Membership Report seconded by Donna Grimes. The motion was approved.

Gilbert Trejo stated there were no corrections to the minutes.

Mark Wolbrink gave the shop report. Mark called Keith Hansen reference the shop air conditioner to get a firm estimate on costs. It was discussed to look at a new air conditioner unit and have the repairman install it. Linda Simpson said she is cataloguing the books in the library and hopes to put this information on the web site. She said she is looking for card and pockets to use to checking out books but there is not a teacher supply shop in town.

Jerrold Simpson gave the Show Report. Jerrold said that he did the survey for the facilities used for the show and gave them a fair rating for set-up and good for everything else. He felt we had the right amount of dealers and stated we could use someone with rough material. Joe Grimes said he would contact the sluice demonstration person to get more information. Flint knappers for demonstrations were also discussed for the show.

Linda Simpson gave the federation report by showing the Board the Federation list of Officers of the Gulf Coast Gem and Mineral Society and to verify the information is correct.

Under old business, Gene Schade said that the information on scholarships has been given to the three schools. He expects to hear back from Del Mar, TAMU-CC and TAMU-Kingsville. He also said that we would send notice to the Geology departments to get applications. There was discussion on the lack of good applications and how we can get the information to the students.

A new logo was discussed. There was not a copy of the new design by Sylvia Kernen so the matter was postponed until the design is shown to the board and then presented to the club for approval.

Linda Simpson talked about the Kids Camp. Linda said we have a field trip site. She said Ronnie Thomas will take us to the Wright Gravel Pitt. Linda presented a schedule of the days of the rock camp and the activities. Linda said the museum is scheduled for their activities. She presented a list of items needed and what we already have. A list of the 18 participants was presented and with the exception of one person who has not paid, Donna Grimes suggested that the participants be informed by e-mail that they are accepted and come to the May meeting for further information.

Under new business, Joe Grimes said that Jerrold Simpson will get a person to make a presentation on ice age fossils. If that person is not available, Jerrold Simpson said he could make the presentation he does for schools.

Joe Grimes said the color of the month is blue.

Sylvia Kernen asked for someone else to be appointed the membership chairman. She said that she can continue until someone else is appointed. Joe Grimes stated that he wants everyone to do only one job and he will present this at the next regular meeting

Linda Simpson makes a motion to adjourn at 8:20 pm seconded by Mark Wolbrink. The motion passed.

## LAPIDARY SHOP RULES

1. The lapidary shop equipment may not be used by anyone who has not signed a liability waiver.
2. Shop equipment use flat fee is \$2.00 per hour. Sign in on arrival. Pay Supervisor and sign out before leaving the shop.
3. "Open shop" hours are to be used only by those who have taken the cabochon class or have shown proficiency on the equipment.
4. All children under the age of 17 must be accompanied by an adult trained on the use of the equipment.
5. Supervisor must inspect rock "set-up" prior to anyone starting slab saw.
6. Long hair should be tied back, loose sleeve should be secured, and safety procedures followed.
7. Safety glasses are recommended and are the responsibility of the individual. Some are furnished by the GCGMS, or you may bring your own.
8. The last person to use a piece of equipment before the shop closes is responsible for cleaning that piece of equipment and the work area. This may include tabletop, sponges, aprons, catch trays, etc.
9. Shop Supervisor is the final authority on shop rules and usage.

*Revised May 2009*

## LAPIDARY SHOP KEYS

Lapidary Shop key masters are:

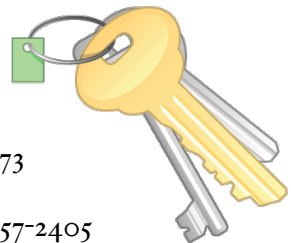
Shop Supervisor:

Mark Wolbrink 361-991-2495

Jerrold Simpson

361-851-8788 / Cell - 361-877-3073

Hank Swan 361-993-9861/361-857-2405



Please call one of these when you would like to use the shop. They will not all be available at the same time, and once in a while none of them will be available most of the time at least one of them should be able to work out a time and date the shop could be open for you. Remember the club has a lot of good equipment to use.

Several different classes are being conducted on Monday evening from 6:00 pm to 9:00pm. The shop is open during these times for use of the equipment even if you are not involved in a class. Shop is also open Saturday 9:00 Until Noon.

*I am a GEOLOGIST*

*to save time, lets just assume that I am never wrong*

**MEMBER of**

**American Federation of Mineralogical Societies**



**South Central Federation of Mineral Societies, Inc.**



**Meeting**

Held the **third Tuesday** of each month at **6:30 pm** at the museum of Science & History, 1900 North Chaparral **September through May**, and at the Lapidary Shop, 3933 Timon Blvd., Corpus Christi TX for **June through August**.

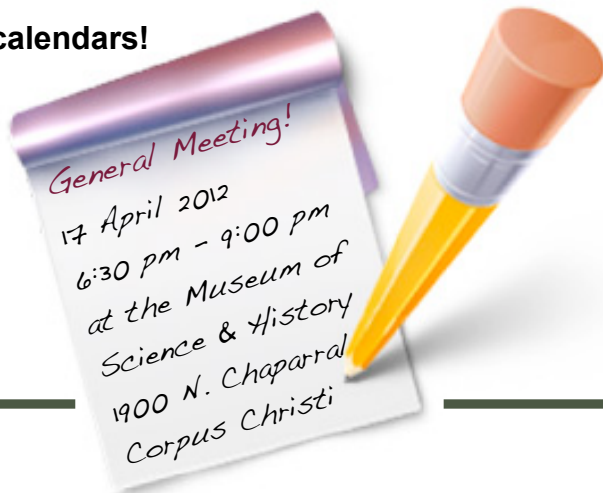
**Membership Fees**

Annual fees: Individuals \$15.00, Couples \$20.00, Junior (under17) \$5.00

**Purpose**

The objective and purpose of the society is to disseminate knowledge of mineralogy, the earth sciences and the lapidary arts. To encourage study in these subjects through the means of: presentation of public exhibitions, field trips for exploration, study and collection of specimens, the presentations of lectures, illustrated programs, demonstrations and similar programs pertaining to the fields of mineralogy, earth sciences and the lapidary arts.

**Mark your calendars!**



**WWW**

Visit us on our website [www.gcgms.org](http://www.gcgms.org)



we are also on [Facebook](#), come and 'like' us on there as well!

Slabs & Cabs  
Sylvia Kernan  
3942 FM 1781  
Rockport TX 78382

**Slabs & Cabs Awards**



2003 SCFMS  
Small Bulletins 4th place

PUBLICATION  
2002 2nd  
2001 1st  
2001-4th place AFMS  
2000 9th place SCFMS  
1999-8th place SCFMS  
1999- 9th place (new editor) AFMS

XXXXXXXX XXXXXXXX  
xxxx First Street  
Anytown, State ZIP

Permission is granted to use any article in this publication, provided proper credit is given.