



**SLABS & CABS**  
**OFFICIAL BULLETIN OF THE**  
**GULF COAST GEM & MINERAL SOCIETY**

**P.O. Box 60781**  
**Corpus Christi, TX 78466**  
**Art Worley Editor**  
**361-345-4425**  
**2561 Raintree Trail**  
**Ingleside, Texas 78362**  
**artleew@agates123.com**

**Volume 49**

**Number 10**

**Oct 2011**

**Next Meetings**

Board Meeting  
1 Nov 2011  
At the Shop  
6:00 PM– 9:00 PM

---

General meeting  
18 Oct 2011  
At the Museum of  
Science & History  
1900 North Chaparral  
Corpus Christi, Texas  
6:30 PM

**Membership Fees for 2012**

Membership dues for 2012 are due in January 2012  
We have 4 types of memberships and they are as follows:  
Single \$ 15.00  
Spousal \$ 20.00  
Junior \$ 5.00  
This is for any member from the age of 6-17 years Of age  
Honorary, Does Not Pay Dues  
If Dues are Not Paid by the time of the Show you will  
**Forfeit Your Membership**  
Sandra Hinkle , Membership Chairlady

**Agate Usan Angus Scotland**



**INSIDE**

Notices ..... Pg 1  
Board Minutes 6 Sept 2011 ..... Pg 2  
Shop Keys & Rules ..... Pg 3  
Board Minutes.....Pg4  
September Birthstone ..... Pg 5  
Coming Events ..... Pg 6  
Time & Space Texas ..... Pg 7  
Info Page ..... Pg 8

**6 September Board Meeting Minutes of the  
Gulf Coast Gem & Mineral Society**

Sorry this is so late. Been a heck of a couple of weeks. Not sure if I'll be there tonight or not, it all depends on the blood pressure. Can someone please print it for tonight? Will let everyone know after Dr appt at 11am if I'll be there or not...

>

The Board Meeting was called to order at 6:35 by President Kevin Schleicher.

Board members in attendance were Kevin Schleicher, Mark Wolbrink, Donna Grimes, Art Worley, Gene Schade, Linda Simpson, Jerrold Simpson and Suzy Nick. Member in attendance was Joe Grimes.

> There was no membership report given. Gene Schade needs a current list of members so he can pay the insurance to the Federation.

The last two board meeting minutes were published in the Cabs and Slabs.

Mark Wolbrink made a motion to approve the minutes and Donna Grimes seconded it. The motion was approved.

Gene Schade presented the Treasurer's Report. Gene did not have a chance to check all banks but Prosperity Bank's rate was not much higher than what we are getting. Suzy Nick made a motion to accept the report as presented and Mark Wolbrink seconded it. The motion was approved.

Mark Wolbrink gave the shop report by saying he had good news because activity at the shop has increased. He also said they cut rocks for two different non members at a charge. We need to come up with a charge for this service.

The air conditioners are not working correctly and Mark will get someone out to check them.

We do not have a field trip chairman but Kevin Schleicher will announce one at our general meeting.

Jerrold Simpson gave a show report by saying he as mailed out 28 contracts for our show.

Donna Grimes has contacted the Caller Times and our ad will be bigger and will appear eight times. She has also put an ad in Rocks and Gem and is working on new ads for the radio and TV. It will also be added the community calendar for the Caller Times.

There was no Education Report.

Linda Simpson presented a current budget and a proposed budget for next year for the Federation.

Old business was the children from the Rock Camp will be at the general meeting with a skit. There will also be lots of pictures and awards will be presented to them.

Donna Grimes will give the information for the poster contest at the general meeting.

All entries will be brought to the meeting in October and the board will judge them at the November Board Meeting and the winner will be presented at the November Meeting.

Donna Grimes was appointed by the president to be on the nominating committee for 2012 officers. The board appointed Linda Simpson to be their representative and another member will be selected from the membership at the September Meeting.

Nominations will be presented at the October meeting, elections will be held at the November meeting and the new officers will be installed at the December meeting.

Under new business Kevin Schleicher would like to award some members of the club for extra things for the club.

Linda Simpson made a motion to adjourn the meeting and Jerrold Simpson seconded it.

The meeting was adjourned at 7:32pm.

Respectively Submitted by  
Suzy Nick  
Secretary

**Black Plume Agate  
Walker Ranch  
Brewster County Texas**

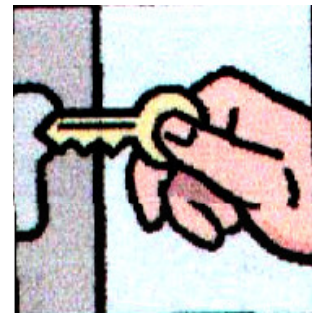


**GCGMS Lapidary Shop Rules**

1. The lapidary shop equipment may not be used by anyone who has not signed a liability waiver.
2. Shop equipment use flat fee is \$2.00 per hour. Sign in on arrival. Pay Supervisor and sign out before leaving the shop.
3. "Open shop" hours are to be used only by those who have taken the cabochon class or have shown proficiency on the equipment.
4. All children under the age of 17 must be accompanied by an adult trained on the use of the equipment.
5. Supervisor must inspect rock "set-up" prior to anyone starting slab saw.
6. Long hair should be tied back, loose sleeve should be secured, and safety procedures followed.
7. Safety glasses are recommended and are the responsibility of the individual. Some are furnished by the GCGMS, or you may bring your own.
8. The last person to use a piece of equipment before the shop closes is responsible for cleaning that piece of equipment and the work area. This may include tabletop, sponges, aprons, catch trays, etc.
9. Shop Supervisor is the final authority on shop rules and usage.

Revised May 2009

**Any Articles, Minutes are other items not received by Thursday Morning 9:00 am After the Board Meeting. Will Not Be Published in That Months Newsletter.**

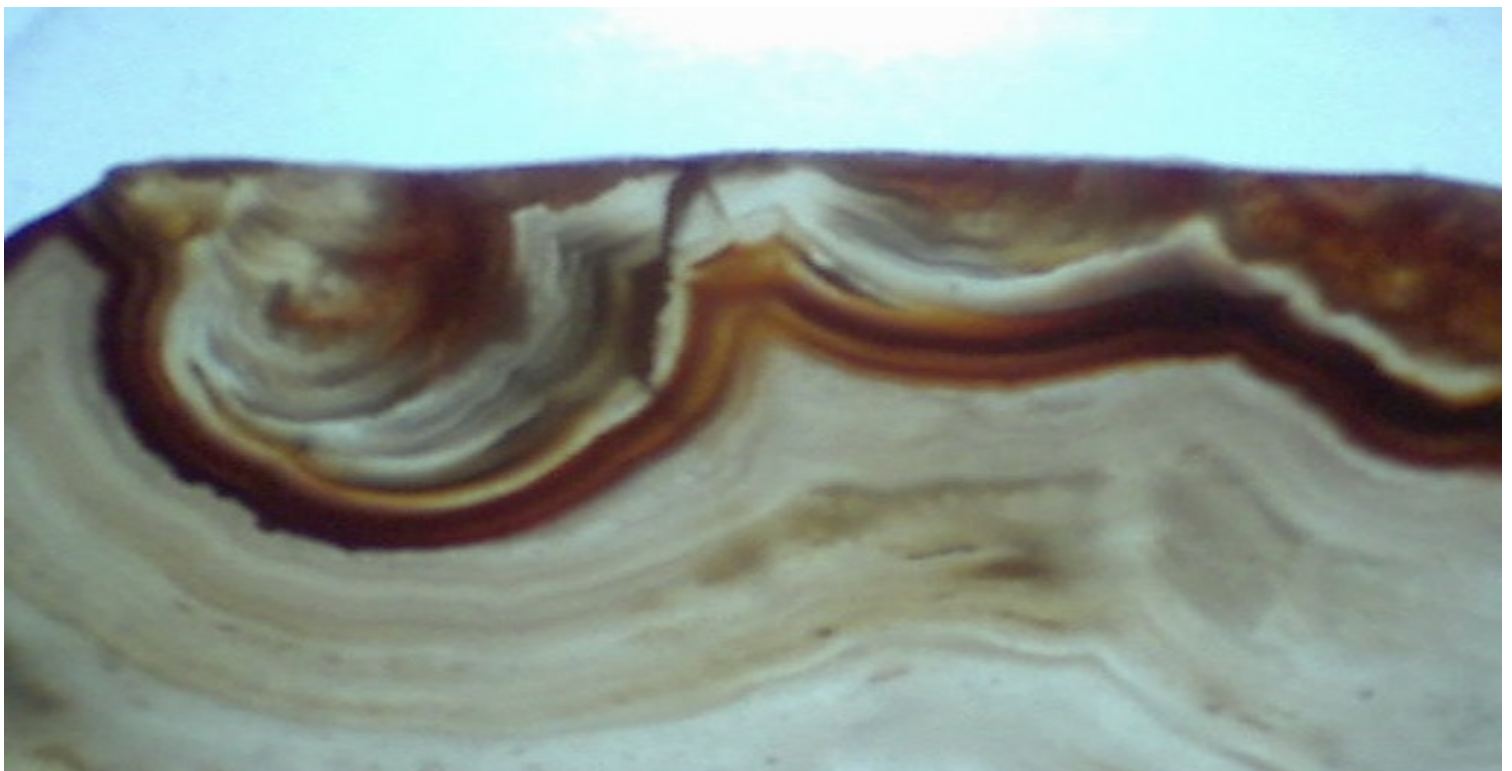


Those with keys to the Lapidary Shop are

Mark Wolbrink 361-991-2495 Shop Supervisor  
 Jerrold Simpson—361-851-8788  
 Cell - 361-877-3073  
 Hank Swan—361-993-9861/361-857-2405

Please call one of these when you would like to use the shop. They will not all be available at the same time, and once in a while none of them will be available. Most of the time at least one of them should be able to work out a time and date the shop could be open for you. Remember the club has a lot of good equipment to use. Several different classes are being conducted on Monday evening from 6:00 PM to 9:00 PM. The shop is open during these times for use of the equipment even if you are not involved in a class. Shop is also open Saturday 9:00 Until Noon.

**Laguna Type Agate  
 San Carlos  
 Mexico**



## 4 October Board meeting minutes

The Board Meeting was called to order at 6:50 by President Kevin Schleicher.

Board members in attendance were Kevin Schleicher, Mark Wolbrink, Donna Grimes, Gene Schade, Jerrold Simpson and Suzy Nick.

Members in attendance were Joe Grimes and Dick Cline.

There was no membership report given.

Suzy Nick read the Board Meeting Notes from 9/6/11. Jerrold Simpson made a motion to approve the minutes and Donna Grimes seconded it. The motion was approved.

Gene Schade presented the Treasurer's Report.

All bills for the Rock Camp have been paid and they came in under what was budgeted.

Suzy Nick made a motion to accept the report as presented and Jerrold Simpson seconded it. The motion was approved.

Mark Wolbrink presented a written shop report. There has been a modest increase in shop use for September.

Twenty gallons of oil-soaked residue from the rock saws was taken to the hazardous waste collection point at the city landfill.

Highland Park Lapidary company say the vises are still in progress but are not ready for sale yet.

An air conditioner technician came out to check the air conditioners at the shop. One is good but the other one will need replacing.

The price he quoted to replace the unit was discussed and it was decided to table the motion until next month and to get a couple more bids.

The Field Trip Report was given by Kevin Schleicher.

He said near College Station is Whisky Bridge by the Brazos River for fossils. This would be an overnight trip. Jerrold Simpson brought up an area north of San Antonio on 181 about 5 miles north of the Blanco Area where we previously went for fossils and the trip was a success. We can rent a van and all share the cost.

It was decided to do the trip on 11/5 and there will be a sign up sheet for the trip at the October general meeting.

Jerrold Simpson gave a show report by saying we need to pay the deposit to the fairgrounds.

Gene Schade will do it. We have eight dealer contracts back so far.

Donna Grimes said the poster contest rules were given at the September meeting and several members were interested in participating. Suzy Nick made a motion to award a \$50 cash prize to the winner and Jerrold Simpson

seconded it. The motion was approved.

There was no Education or Federation Report.

Under old business Donna Grimes said the nomination committee met and will nominate Joe Grimes for president, Jerrold Simpson for vice-president, Gene Schade for treasurer and Gilbert Trejo for secretary.

Nominations will be accepted from the floor at the general meeting and the officers will be voted on in the November meeting.

Gene Schade sent out scholarship application and rules to Kingsville, Del Mar and CC A&M. He also sent a copy to Art Worley to be added to our website.

New business was the Christmas Party. Jerrold Simpson said he would check with Hank and Mary Lou Swann to see what day the

church is available for our party.

We would like to have it either the first or second week in December.

Donna Grimes would like to give each member who sold their 10 presale tickets to our show an additional 10 free tickets to give to strangers that have not attended our show.

It was decided to use different color tickets to track those that came in with free tickets and to see if it brings in new people to our show. For those that buy door tickets, every ticket that ended in 50 would get in free for our 50th Anniversary show.

Jerrold Simpson made a motion to do this and Suzy Nick seconded it. The motion was carried.

Mark Wolbrink made a motion to adjourn the meeting and Kevin Schleicher seconded it. The meeting was adjourned at 8:30pm.

Respectively submitted by

Suzy Nick

Secretary

**Jasper-Agate Agate Hill  
Woodward Ranch  
Brewster County Texas**



## Traditional Birthstones - Tourmaline (October)

If you were born in October, you are one of those people who has a choice for your birthstone. Opal was originally the gem trade's recognized birthstone for October but in 1952 the Jewelry Industry Council suggested that pink tourmaline be an alternate stone to opal. These changes were accepted and approved by the American Gem Society and the National Retail Jewelers Council. Although the original designation for tourmaline was pink tourmaline, the practice has become that many people accept tourmaline of any color for October's birthstone. Tourmaline comes in nearly every shade one can find on a color chart or color wheel--therefore, tourmaline has become a popular stone in recent years.

Tourmaline derives its name from the Singalese word *tourmali*, which means "mixed stones." Ruby, sapphire, peridot and spinel have all been found together in the gravel of localities such as Sri Lanka and Burma. The early gem traders who had no idea about the optical and physical properties of gems, other than color, probably called red tourmaline ruby; blue tourmaline sapphire; green tourmaline peridot, etc. Modern gem testing equipment has enabled gemologists to differentiate between all of these stones and it was with development of optical gem testing techniques that the gemological properties of fine tourmaline were made known to the world.

Tourmaline is a complex silicate of Boron and Aluminum. Many different elements are able to find a spot for substitution in the crystal lattice and this accounts for all of the different colors of tourmaline that are available to the gem fancier. It would be difficult to write down a neat and easy formula for tourmaline because of the numerous possible substitutions that can take place within the crystal. In the past names such as *rubellite* and *indicolite* were used for red and blue tourmaline respectively. Since the mineral suffix *ite* implies each are a different mineral, it is now preferable to use the terms red tourmaline and blue tourmaline, etc.

Tourmaline's many color variations make it an example for another kind of mis-labeling. For example, one will sometimes see the usage of names such as *Brazilian sapphire* or *Brazilian emerald* for blue and green tourmaline respectively. Such names confuse the potential buyer into thinking the stone is something other than what it really is.

Tourmaline is fairly easy to identify. Finished stones have a soft luster and the two refractive indexes, 1.620 and 1.640 allow for some doubling of back facets and inclusions in the stone. Tourmaline may also show some long tubes that are oriented parallel to the c-axis of the crystal. The typical tourmaline crystal is long and sub-triangular in cross section and the outer surface is usually deeply striated. The lapidary must orient the stone such table of the stone is parallel to the c-axis of the crystal. Tourmaline absorbs light along the c-axis of the crystal and if the table is perpendicular to that axis, the stone will develop a very dark body color. If you have a transparent tourmaline crystal available, look at it from directions that are perpendicular to the c-axis and parallel to the c-axis. The effect will be striking.

Tourmaline may show a couple of different phenomena: watermelon tourmaline and particolor tourmaline. In the former, the outer layer of the crystal is green and the inner part of the crystal is red and there

may be small black inclusions that resemble black seeds similar to a cross section of watermelon. The distinction is now used for any tourmaline that has an outer layer of the crystal with one color and an interior of another. These color variations may be brought about by varying concentrations of metallic cations that that were favored in crystallization of tourmaline from a solution or melt.

In the United States tourmaline has been found in Maine, North Carolina, and California. The Black Hills of South Dakota have produced some finely colored blue stones that have been rarely used for gems because of small size and many tiny fractures. Brazil has produced many fine tourmaline crystals of many colors that have found use both as cut gems and as museum specimens. Namibia, Nigeria and Zambia in Africa have produced some fine gem tourmaline in recent years.



## Coming Events

### October 2011

1-2 JACKSONVILLE, AR: Central Arkansas GMGS 39th Annual Show; Jacksonville Civic Center, 5 Municipal Drive; Sat & Sun 9-5; FREE; more than 20 dealers, demonstrations, exhibits, door prizes, Kids. Dig, geode cracking, Rock Spin, mineral identification, grand prize; contact Lenora Murray, 218 Old Hwy 11S, Hazen, AR 72064, (870) 255-3679; email: lenoramur@aol.com; Website: centralarrockhound.org

8-9 FT WORTH, TX: LMRA Stone Steppers Annual Show; Lockheed Martin Recreation Association, 3400 Bryant Irvin Road; Sat & Sun 9-6; FREE; rocks, gems, minerals, flinters, prospecting equipment, GPAA, jewelry, pottery, stained glass, children.s activities; contact Steve Shearin, 860 Stafford Station Drive, Saginaw, TX 76131, (817) 733-5368; e-mail: [steve.l.shearin@lmco.com](mailto:steve.l.shearin@lmco.com)

8-9 TEMPLE, TX: Tri-City G&M Society Annual Show; Mayborn Convention Center, 3303 N 3rd Street; Sat 9-6, Sun 10-5; adults \$3; silent auctions, raffles, door prizes, grand prize, demonstrations, dealers, rough, slabs, cabs, faceted gems, equipment, finished jewelry; contact Chip Burnette, 2630 Polk Street, Killeen, TX 76543, (254) 630-3573; email: [burnette@aceweb.com](mailto:burnette@aceweb.com)

13-15 MT IDA, AR: 25th Annual World Champion Quartz Crystal Digging Contest; Mt Ida Area CofC; Montgomery County Fairgrounds, Fairgrounds Road; Thu thru Sat 9-3; adults \$80 (\$95 after Oct 1); dig quartz crystals, keep all you find, meet other miners, maybe win a prize; contact Maureen Walther, Mt Ida Area Chamber of Commerce, Mt Ida, AR 71957, (870) 867-2723; email: [director@mountidachamber.com](mailto:director@mountidachamber.com); Website: [www.mountidachamber.com](http://www.mountidachamber.com)

14-16 MT IDA, AR: .Quartz, Quiltz & Craftz Festival.; Mt Ida Area CofC; Montgomery County Fairgrounds, Fairgrounds Road; Thur thru Sat 9-6, Sun 10-4; FREE; dealers, minerals, jewelry, quartz crystals, quilts, crafts, kid.s digging contest Sat; cont; Maureen Walther, Mt Ida Area C of C, Mount Ida, AR 71957, (807) 867-2723; email: [director@mountidachamber.com](mailto:director@mountidachamber.com); Website: [www.mountidachamber.com](http://www.mountidachamber.com)

21-23 AUSTIN, TX: .Gold. Annual Show AGMS; Palmer Events Center, 900 Barton Springs Road; Fri 9-5, Sat 10-6, Sun 10-5; adults \$5, Srs (60/over) \$4, students (13-18) \$1, children (6-12) 50 cents; 30 + dealers, jewelry, beads, gemstones, mineral specimens, crystals, fossils, spheres, lapidary equip, exhibits, Rock Food. table, touch table, fluorescent minerals, member collections, silent auction, demonstrations, faceting, fossil cleaning, polymer clay, .Youth Education Day. Friday, Gem Mine, Wheel of Fortune, Jewelry Making, door & grand prize; contact Susan Postlethwait, 6719 Burnet Lane, Austin, TX 78757, (512) 458-9546; email: [showchariman@austingemandmineral.org](mailto:showchariman@austingemandmineral.org); Web site: [www.gemcapers.com](http://www.gemcapers.com)

### November 2011

11-13 PASCAGOULA, MS: Mississippi Gulf Coast Gem & Mineral Society Annual Show, Magnolia State Gem, Mineral & Jewelry Show; Jackson County Fairgrounds, 2902 Short Cut Road; Fri 10-6, Sat 9-6, Sun 10-5; adults \$3, children 12 & under free; door prizes, raffle, 20 dealers, gold panning and sluicing; contact James Darnell, 7121 Oakhurst Drive, Ocean Springs, MS 39564, (228) 875-2310

Flower Garden Agate Agate Hill  
Woodward Ranch Brewster County Texas



## Time and Space — Texas USA

### Paleontology and geology

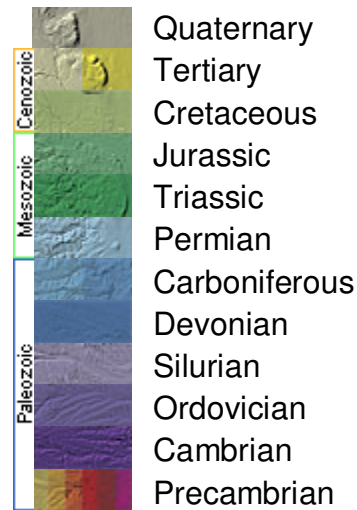
The Precambrian: Precambrian rocks can be seen today in the area commonly referred to as the Llano Uplift of central Texas and in far western Texas. Fossils are rare to non-existent in these [metamorphic](#) and [igneous](#) rocks.

**The Paleozoic:** Paleozoic rocks are well represented in Texas. The presence of Cambrian sandstones indicates that sediments were brought into the sea from land areas to the northwest of the state. The [limy](#) sediments deposited farther out to sea preserved the remains of trilobites, brachiopods, bivalves, sponges, and other invertebrates. This deposition of limy sediments continued through the Silurian and Devonian; however, fossils are rare in the Silurian rocks and most Texas Devonian rocks are subsurface and can only be seen in [drill cores](#). Rocks of the Early Carboniferous are not exposed at the surface in Texas, while rocks of the Late Carboniferous are well exposed in north-central Texas, and fossils are quite common in these outcrops.

During the Permian, north-central Texas was an area of changing environments, where shallow marine waters gave way to lowland coastal areas. Extensive Permian salt and gypsum deposits indicate that evaporation rates were high, and the [red beds](#) in this region contain an abundant vertebrate fossil record. An ancient reef system preserved in the Guadalupe Mountains of far western Texas is evidence that the sea still covered that part of the state. These rocks are rich in marine invertebrate fossils as well as rare vertebrate fossils, primarily sharks.

**The Mesozoic:** Mesozoic rocks are common in several parts of Texas. Triassic sands and shales were deposited as part of a large river system. These rocks contain a well-documented vertebrate fossil record that includes numerous reptiles and amphibians. Rocks of the Jurassic Period are virtually absent at the surface in Texas, but can be seen in a few small exposures in far western Texas and in subsurface drill cores. The Cretaceous was a time of fluctuating sea levels in the state. The shoreline shifted back and forth many times, leaving behind a record of both marine and non-marine environments. These rocks contain a rich fossil record including dinosaurs, other reptiles, amphibians, birds, fish, and mammals.

**The Cenozoic:** During the Tertiary, extensive volcanic activity poured lavas across the landscape in far western Texas; however, much of the modern High Plains and Texas Coastal Plains are covered by rocks formed from sediment washed down from the rising Rocky Mountains to the northwest. These sedimentary rocks contain a rich vertebrate fossil record, including a large assortment of fossil mammals. There is a wide band of Quaternary deposits along the modern Gulf Coast and in several places in west Texas. Fossils found in these deposits include bones of bison, mammoths, and mastodons



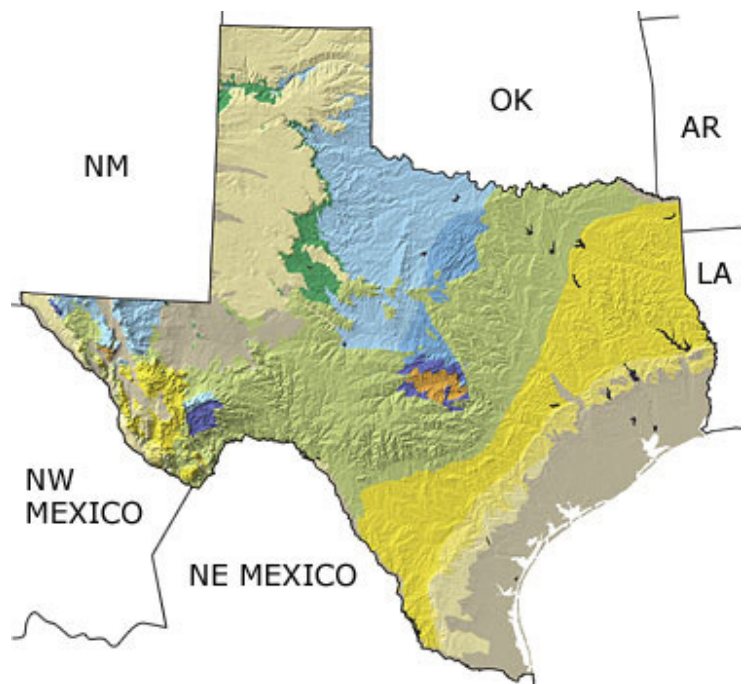
Dates (mya)

[Time Scale Legend](#)

State Fossil:



Pleurocoelus (state dinosaur)  
Texas does not have a state fossil, but it does have a state dinosaur, as well as a fossil for its state stone (petrified palm wood). Pleurocoelus was a large herbivorous sauropod dinosaur that lived during the Early Cretaceous (~ 140-110 million years ago).



Source

<http://www.paleoportal.org>

**GULF COAST GEM & MINERAL SOCIETY, INC.**  
**P.O. Box 60781 Corpus Christi, TX 78466**

**MEMBER of**

American Federation of  
Mineralogical Societies



South Central  
Federation of  
Mineral Societies, Inc



**Meeting**

Held the third Tuesday of each month at 6:30 pm at the museum of Science & History  
1900 North Chaparral September through May, and at the Lapidary Shop 3933 Timon Blvd.,  
Corpus Christi TX for June through August.

**Membership Fees**

Individual \$15.00 Couples \$20.00 Junior (under17) \$5.00

**2011 Officers**

President: Kevin Schleicher  
Vice President: Kyle Hinkle  
Past President: Suzy Nick

Secretary: Suzy Nick  
Treasurer: Gene Schade  
gene@casadeoro.net

**Board  
Appointees**

Membership: Sandra Hinkle  
Education: Owen Hopkins  
Librarian: Linda Simpson  
Treasurer Gene Schade  
Show Chair: Jerrold Simpson

Show Publicity: Donna Grimes  
Shop coordinator: Mark Wolbrink  
Field Trip Coordinator: John Anderson  
Dealer Chair: Jerrold Simpson

**Standing  
Committies**

Shop coordinator: Mark Wolbrink  
Federation Liaison: Linda Simpson  
Historiorn: Frances Marten  
Librarian Linda Simpson  
Communications: Suzy Nick

Bulletin Editor; Art Worley  
Webmaster: Art Worley  
E-mail artleew@agates123.com  
Door Prizes; Gilbert Rodriguez  
Refreshment Hostess; Letty Rodriguez

**Slabs & Cabs**

Art Worley  
2561 Raintree Trail  
Ingleside, TX 78362

**Slabs & Cabs Awards**



Small Bulletins 4th place

PUBLICATION  
2nd 2002                      2001 1st  
2001-4th place AFMS  
2000 9th place SCFMS  
1999-8th place SCFMS  
1999- 9th place (new editor) AFMS

Permission is granted to use  
any article in this publication,  
provided proper credit is given.