



SLABS & CABS
OFFICIAL BULLETIN OF THE
GULF COAST GEM & MINERAL SOCIETY

P.O. Box 60781
Corpus Christi, TX 78466
Art Worley Editor
361-345-4425
2561 Raintree Trail
Ingleside, Texas 78362
artleew@agates123.com

Volume 49

Number 9

September 2010

Next Meetings

Board Meeting
7 September 2010
Downtown Library
6:00 PM– 9:00 PM

General meeting
21 September 2010

Regular Meeting
Watergarden Room
Corpus Christi
Museum of Science & History
1900 No. chaparral
Corpus Christi, Texas
6:30 PM

Membership Fees for 2010

Membership dues for 2010 are due in January 2010
We have 4 types of memberships and they are as follows:
Single \$ 15.00
Spousal \$ 20.00
Junior \$ 5.00
This is for any member from the age of 6-17 years Of age
Honorary
Sandra Hinkle , Membership Chairlady



INSIDE

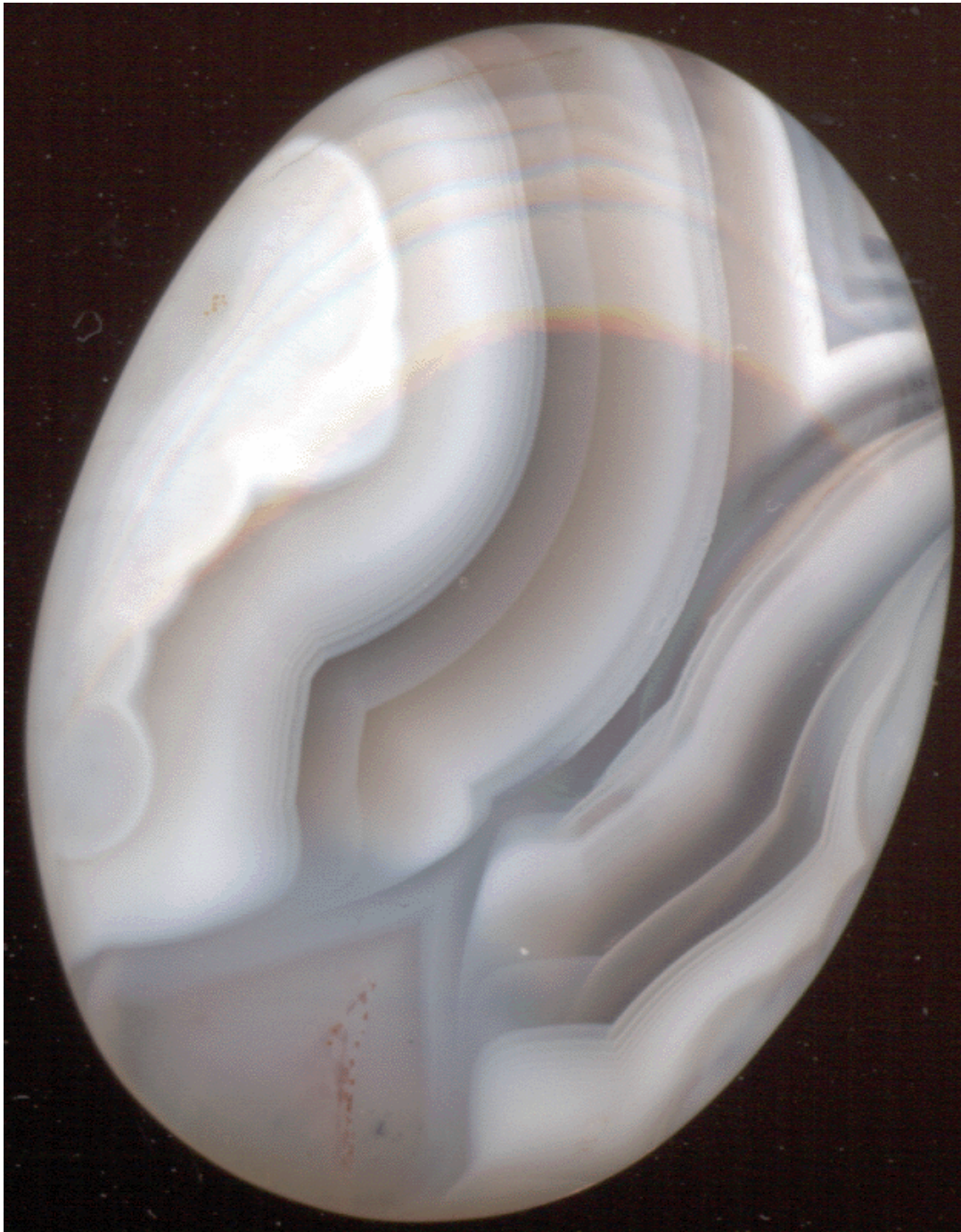
Notices Pg 1
Board Minutes None Pg 2
Shop Keys & Rules Pg 3
September Birthstone ... Pg 4-5-6
Coming Events..... Pg 7-8-9

**Path of Condi
Scotland**

We are on-line
www.gcgms.org
Thanks to Chris Davis of Spurfire and Owen Hopkins
For getting us back up and running! Take a look.

**7 September 2010 Board Meeting of the
Gulf Coast Gem & Mineral Society**

No Minutes

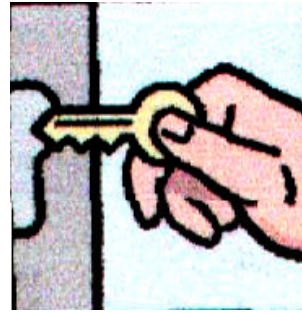


Path of Condi Scotland

GCGMS Lapidary Shop Rules

1. The lapidary shop equipment may not be used by anyone who has not signed a liability waiver.
2. Shop equipment use flat fee is \$2.00 per hour. Sign in on arrival.
Pay Supervisor and sign out before leaving the shop.
3. "Open shop" hours are to be used only by those who have taken the cabochon class or have shown proficiency on the equipment.
4. All children under the age of 17 must be accompanied by an adult trained on the use of the equipment.
5. Supervisor must inspect rock "set-up" prior to anyone starting slab saw.
6. Long hair should be tied back, loose sleeve should be secured, and safety procedures followed.
7. Safety glasses are recommended and are the responsibility of the individual. Some are furnished by the GCGMS, or you may bring your own.
8. The last person to use a piece of equipment before the shop closes is responsible for cleaning that piece of equipment and the work area. This may include tabletop, sponges, aprons, catch trays, etc.
9. Shop Supervisor is the final authority on shop rules and usage.

Revised May 2009



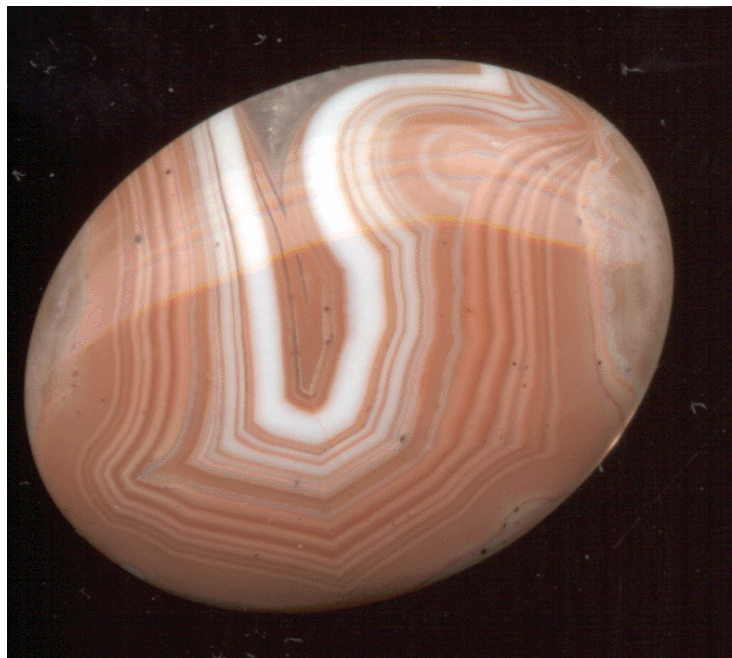
Those with keys to the Lapidary Shop are

Mark Walbrink 361-991-2495 Shop Supervisor
 Jerrold Simpson—361-851-8788
 Cell - 361-877-3073
 Hank Swan—361-993-9861/361-857-2405

Please call one of these when you would like to use the shop. They will not all be available at the same time, and once in a while none of them will be available. Most of the time at least one of them should be able to work out a time and date the shop could be open for you. Remember the club has a lot of good equipment to use. Several different classes are being conducted on Monday evening from 6:00 PM to 9:00 PM. The shop is open during these times for use of the equipment even if you are not involved in a class. Shop is also open Saturday 9:00 Until Noon.



**Path of Condi
Scotland**



Any Articles, Minutes are other items not received by Thursday Morning 9:00 am After the Board Meeting. Will Not Be Published in That Months Newsletter The Editor

September Birthstone Sapphire

Compiled by Roger K. Pabian, Research Geologist, Emeritus
School of Natural Resources, UNL

If you were born in the month of September, sapphire is your birthstone. Sapphire is a variety of corundum or aluminum oxide and Al_2O_3 gives its chemical formula---that is, two parts of Aluminum to three parts of Oxygen. The axes are arranged in a hexagonal crystal, a crystal with four axes, three of which are of equal length and intersect at 60 degree angles, and one of which is unequal in length to the others and intersects the others at a right angle.

Sapphire's companion variety of corundum is ruby. Rubies are red to orange-red to purplish red. If corundum is pink, the United States Federal Trade Commission requires that the stone be sold as a sapphire. In the United States "pink rubies" are eliminated from the gem trade by legal definition. In the simplest terms, corundum that is any color other than red is a sapphire. Except for color, all of the other physical and optical properties of sapphire are identical to those of ruby and you are referred to the ruby page for these data.

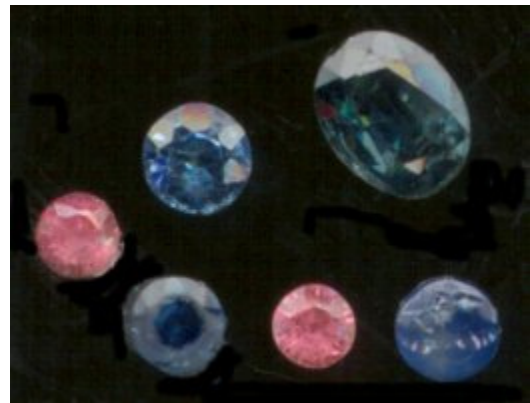
Supply and demand has dictated that cornflower blue sapphires are the most expensive. These stones are rare and the finest examples come from Kashmir, a mountainous area in northern India on the Pakistan border. Geographic isolation, political instability and high demand all combines to make these stones very expensive.

Sapphires have been found in many other places in the world but few have attained the desirability of the Kashmir stones. In the United States, the Yogo Gulch area in Montana has historically produced some fine sapphires but few of these attain the size of the fine Kashmir gems. Labor and mining costs have been very high in the United States and the Yogo Gulch mines have generally not been profitable for the operators.

Fee localities are areas where one can pay a set fee for the privilege to extract gems and minerals from mines or claims that are owned by a second party. There are several such fee locality sapphire mines in Montana that have been profitable for both the mine owners and the prospectors who have chosen to pay the fee. The prospector pays a set fee for the right to extract a given weight or volume of sapphire bearing rock or gravel. The fee locality operators allow only the use of hand tools such as picks, shovels, crowbars, gads and wedges. The miner extracts the sapphire bearing rock with the larger tools. This material is sieved through a series of screens that allow the miner to separate and discard the extremely large cobbles as well as the very fine grained sand, silt and clay. The volume the miner pays for is actually only that that is in the size range that will produce the most useable stones. The sieved residue is placed in buckets and toward the end of the day the miners return to the base camp where the operators have electric shake tables that wash the gravel and concentrate the particles with high specific gravity toward the bottom of a pan. A half-ton of gravel may actually yield only a few pounds of



Sapphire crystals, Sri Lanka.



Natural sapphires, Burma and Sri Lanka.



Boule of synthetic sapphire. Boules develop split upon cooling.

Continued on Next Page

Birthstone Continued from Previous Page

sapphire bearing concentrate. When the concentrate is collected in the pan, the pan is removed from the shaker and is dumped over quickly on a flat table. The largest sapphires will normally be on the top of the pile or what was earlier the bottom of the pan. Smaller stones may be found through the rest of the concentrate.

In addition to sapphire being found in Montana, some stones have also been produced from mines in North Carolina where several fine localities exist. Alluvial gravel that covers much of the North American mid-continent has also produced an occasional sapphire for the lucky prospector. In the Old World sapphire has been found in alluvial gravel in Burma and Sri Lanka. Many of the colorless stones from Sri Lanka can be enhanced by heat treatment. There are many other localities of lesser importance throughout the world that have produced sapphires.

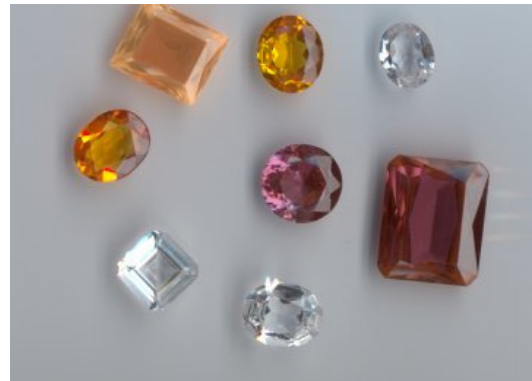
Johnson and Coeval (1998, p. 293, 294), citing F. L. Southland and M. I. Garland stated that corundum formed in two distinct geochemical environments. (1) Alkali basalt where partial melting of the lithosphere over rising plumes of the earth's mantle can lead to eruptions of gem bearing lava. (2) Sapphires from Montana formed in crustal metamorphic sources on the basis of low Gallium contents. Sapphire form in rocks that geologists call undersaturated, or rocks that have no free quartz. Spinel is another gem that forms in undersaturated rocks. Spinel may come in many of the same colors as sapphire and in earlier times many stones that were called sapphire or ruby included both corundum and spinel. Modern gem testing procedures can easily separate the two different minerals.

The colors of sapphires and rubies are controlled by trace elements that are included in the crystal lattice in amounts usually not exceeding about three percent. Some of these are listed in the table below:

- Chromium Oxide, Cr_2O_3 ---**ruby**
- Titanium Oxide, TiO_2 and Ferrous Iron Oxide, Fe_2O_3 ----**blue**
- Ferrous Iron Oxide---**yellow**



Synthetic sapphire cabochons.



Synthetic sapphires.



Blue glass, a common sapphire substitute.



Sapphire-bearing alluvial gravel, Montana.



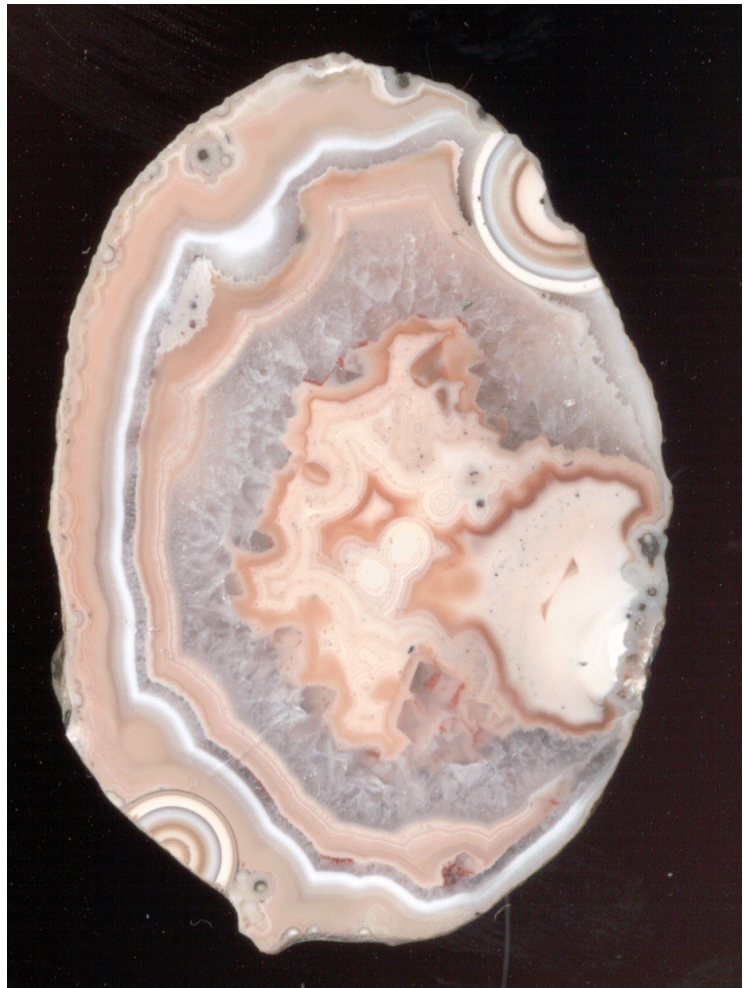
Miner digging sapphire-bearing gravel, Montana.



Sized and sorted gravel concentrate that may contain sapphires. Note manually operated sieve at back.



Mechanical shake table used to separate high specific gravity mineral that may contain sapphires.



**Path of Condi
Scotland**

Sept 2010**Coming Events**

3-5--SANTA BARBARA, CALIFORNIA: Show, "Gem Faire"; Gem Faire Inc.; Earl Warren Showgrounds/Exhibit Hall, 3400 Calle Real; Fri. 12-7, Sat. 10-6, Sun. 10-5; weekend pass \$5; contact Yooy Nelson, (503) 252-8300; e-mail: info@gemfaire.com; Web site: www.gemfaire.com

3-6--CRAWFORD, NEBRASKA: 24th annual show, "Crawford Rock Swap"; Northwest Nebraska Rock Club; Crawford City Park, 1st St. and Main St.; Fri. 8-6, Sat. 8-6, Sun. 8-6, Mon. 8-12; free admission; buy, sell, trade, swap, rocks, minerals, fossils, agates, free agate bed field trips; contact Wade Beins, 120 Gordon Ave., Box 569, Chadron, NE 69337, (308) 432-8950; e-mail: agates@bbc.net

3-6--FORT BRAGG, CALIFORNIA: 48th annual show; Mendocino Coast Gem & Mineral Society; Town Hall, Main and Laurel; Fri. 10-6, Sat. 10-6, Sun. 10-6, Mon. 10-4; free admission; contact Don McDonell, P.O. Box 868, Fort Bragg, CA 95437, (707) 964-3116, or Jane Webb, (707) 964-7182

4-5--ARLINGTON, TEXAS: 53rd annual show, "Texas Treasures"; Arlington Gem & Mineral Club; Arlington Convention Center, 1200 Ballpark Way; Sat. 10-6, Sun. 10-5; adults \$6, seniors and children \$3; Kids' Korner, Rock Food Table, gem identification, silent auction, Grand Prize, hourly door prizes, vendors, jewelry, beads, gems, minerals, fossils; contact Karen Cessna, 2213 Hackberry Dr., Arlington, TX 76013, (817) 860-5232; e-mail: cessnak@ont.com; Web site: www.agemclub.org

4-6--CANBY, OREGON: Show, "Willamette Valley Gem, Mineral & Jewelry Show"; Oregon Gem, Mineral & Jewelry Shows; Clackamas County Fairgrounds, 694 N.E. 4th Ave.; Sat. 9-6, Sun. 9-6, Mon. 9-4; free admission; contact Jean Miller, P.O. Box 136, Molalla, OR 97038, (503) 829-2680; e-mail: shadow92337@molalla.net; Web site: www.ogmshows.com

4-6--SILVER CITY, NEW MEXICO: 27th annual show; Rolling Stones Gem & Mineral Society; Grant County Business and Conference Center, 3031 Hwy. 180 E, next to ACE Hardware; Sat. 10-5, Sun. 10-5, Mon. 10-4; free admission; more than 55 dealers, daily free field trips, silent auction, wheel of fortune; contact Marcia Andre, 1311 Peterson Dr., Silver City, NM 88061, (575) 534-0006; e-mail: marciarandre@gmail.com; Web site: www.rollingstonesgms.blogspot.com

9-12--TUCSON, ARIZONA: Business-to-business gem trade show; Gem & Lapidary Wholesalers Inc.; Holiday Inn Palo Verde/Holidome, 4550 S. Palo Verde Rd. (I-10 at Palo Verde Rd.); Thu. 10-6, Fri. 10-6, Sat. 10-6, Sun. 10-3; contact G&LW, P.O. Box 98, Flora, MS 39071-0098, (601) 879-8832; e-mail: info@glwshows.com; Web site: glwshows.com

9-12--TUCSON, ARIZONA: Business-to-business gem trade show; Gem & Lapidary Wholesalers Inc.; The Grant Inn, 1365 W. Grant Rd. (I-10 and Grant Rd.); Thu. 10-6, Fri. 10-6, Sat. 10-6, Sun. 10-3; contact G&LW, P.O. Box 98, Flora, MS 39071-0098, (601) 879-8832; e-mail: info@glwshows.com; Web site: glwshows.com

10-12--FERNDALE, CALIFORNIA: 6th annual show, "Wildcat Gem Fest"; Wildcat Gem & Mineral Society; Humboldt Co. Fairgrounds, 1250 5th St.; Fri. 12-7, Sat. 10-7, Sun. 10-5; free admission; door prizes, raffles, kids' games, demonstrations, classes, gems, minerals, fossils, jewelry, silent auction; contact Mike Martin/The Stonery, P.O. Box 189, Miranda, CA 95553, (707) 499-6194; e-mail: micknorma@directv.net

10-12--MARIETTA (ATLANTA), GEORGIA: Show; Frank Cox Productions; Cobb County Civic Center, 548 S. Marietta Pkwy.; Fri. 1-5, Sat. 10-5, Sun. 10-5; gems, jewelry, beads; contact Frank Cox Productions, 755 S. Palm Ave. #203, Sarasota, FL 34236, (941) 954-0202; e-mail: frankcox@comcast.net; Web site: www.frankcoxproductions.com

10-12--SAN RAFAEL, CALIFORNIA: Show, "Gem Faire"; Gem Faire Inc.; Marin Center/Exhibit Hall, 10 Avenue of the Flags; Fri. 12-7, Sat. 10-6, Sun. 10-5; weekend pass \$5; contact Yooy Nelson, (503) 252-8300; e-mail: info@gemfaire.com; Web site: www.gemfaire.com

10-12--TOLEDO, OHIO: 39th annual show and sale; Toledo Gem & Rockhound Club; Stranahan Complex, 4645 Hea-

therdowns Blvd.; Fri. 2-8, Sat. 10-6, Sun. 11-5; adults \$4, seniors and students \$3, children under 12 free; free kids' mineral kits and games, exhibits, demonstrations, mini classes, Touch & Feel Area, scholarship raffle, silent auction, club sales, more than 20 dealers, beads, jewelry, gems, precious metals, fossils, minerals, carvings, gem trees, tools, equipment; contact Jerri Heer, 247 Decatur, Toledo, OH 43609, (419) 531-8124; e-mail: jheerx6@aol.com; Web site: www.rockyreader.com

10-12--WINSTON-SALEM, NORTH CAROLINA: 39th annual show; Forsyth Gem & Mineral Club; Educational Bldg., Dixie Classic Fairgrounds, Gate #9; Fri. 10-7, Sat. 10-7, Sun. 12-5; contact W.A. Marion, 1163 Bear Creek Church Rd., Mocksville, NC 27028; e-mail: MarionA1@yadtel.net

11--TULSA, OKLAHOMA: Show, "Indian Nations Artifact & Fossil Show"; Bill Breckinridge and Harvey Shell; Oral Roberts University, Mabee Center, 81st and Lewis Ave.; Sat. 8-5; adults \$3, children 12 and under free; contact Harvey Shell or Bill Breckinridge, (918) 284-8216; e-mail: billbreckinridge2003@yahoo.com

11-12--DOWNEY, CALIFORNIA: Show; Delvers Gem & Mineral Society; Woman's Club of Downey, 9813 Paramount Blvd.; Sat. 10-6, Sun. 10-4; free admission; contact Fred Dexling, (562) 425-0192; e-mail: mdexling@verizon.net

11-12--ROSEBURG, OREGON: Show, "Rough to Gems"; Umpqua Gem & Mineral Club; Douglas County Fairgrounds, I-5 Exit 123; Sat. 10-6, Sun. 10-4:30; free admission; dealers, rough, gems, minerals, fossils, beads, jewelry, tools, equipment, books, display cases, demonstrators, knapping, UV mineral exhibit, silent auction, wheel of fortune, geode cutting, raffle, door prizes, gold panning, kids' rock hunt; contact Bob Sampson, 752 Cooper Creek Rd., Sutherlin, OR 97479, (541) 459-1755; e-mail: davenmow@q.com

11-12--SILOAM SPRINGS, ARKANSAS: Annual fall swap; Northwest Arkansas Gem & Mineral Society; clubhouse, Hwy. 43N; Sat. 9-5, Sun. 10-5; free admission; auction, kids' gem wash, silent auctions, grab bags; contact Dave Leininger, (479) 787-5619; e-mail: hulagrub@aol.com; Web site: www.nwarockhounds.org

11-12--WALLA WALLA, WASHINGTON: Show, "Walla Walla Gem & Mineral Show"; Marcus Whitman Gem & Mineral Society; Walla Walla County Fair Ground, Community Center, 9th St. and Orchard; Sat. 10-5, Sun. 10-5; dealers, opal, petrified wood, jasper, agate, sunstone, wire wrapping, faceted gems, slabs, rough, jewelry, silent auction, demonstrations, kids' section; contact Warren Rood, (509) 522-2330; e-mail: warrenrood@yahoo.com

14--GREEN BAY, WISCONSIN: Show, "Rings & Things BeadTour"; Rings & Things; Suamico Ale House, 2310 Lineville Rd.; Tue. 12-4; free admission; gemstones, bead strands, wholesale prices, findings, stringing supplies; contact Dave Robertson, (800) 366-2156; e-mail: drobertson@rings-things.com; Web site: www.rings-things.com

15-19--DENVER, COLORADO: Fall show, "Colorado Mineral & Fossil Show"; Martin Zinn Expositions LLC; Holiday Inn - Denver Central, 4849 Bannock St.; free admission; 200 wholesale and retail dealers from all over the world, free shuttle to shows at the Merchandise Mart; Wed. 10-6, Thu. 10-6, Fri. 10-6, Sat. 10-6, Sun. 10-5; contact Martin Zinn Expositions, P.O. Box 665, Bernalillo, NM 87004-0665, fax (303) 223-3478; e-mail: mzexpos@aol.com; Web site: www.mzexpos.com

15-19--DENVER, COLORADO: Show and sale, "Denver Coliseum Mineral Show"; Eons Expositions; Denver Coliseum, 1900 44th St.; Wed. 10-6, Thu. 10-6, Fri. 10-6, Sat. 10-6, Sun. 10-4; free admission; 130 dealers, minerals, fossils, crystals, meteorites, gems, artisan jewelry, gold, services, equipment, displays; contact Lowell Carhart, 7514 Antelope Meadows Circle, Peyton, CO 80831, (719) 886-7046; e-mail: lowellcarhart@yahoo.com; Web site: www.ColiseumShow.com

15-19--DENVER COLORADO: Wholesale/retail show, "Denver Expo 2010"; T.E.P. Gem Show; National Western Complex, 4655 Humboldt Street Wed. 10-7, Thu. 10-7, Fri. 10-7, Sat. 10-7, Sun. 10-4; free admission; open to the public, free shuttles to other shows; contact Al Sargent, T.E.P. Gem Show, P.O. Box 2902, Tucson, AZ 85702, (520) 883-6447; e-mail: TEPGemShow@cs.com; Web site: www.tucsonelectricparkgemshow.com

17-19--COOS BAY, OREGON: Show, "South Coast Rock & Gem Fest 2010"; Far West Lapidary and Gem Society; 4th St. parking lot, across from Outdoor-In, downtown; Fri. 10-5, Sat. 10-5, Sun. 10-5; dealers, rockhound sales, jewelry, gems, minerals, fossils, rough and finished rocks, tumbled rock, geodes, faceted stones, cabochons, thunder eggs; contact Rocky Pribble, P.O. Box 251, Coos Bay, OR 97420, (541) 572-8301

17-19--DENVER, COLORADO: 43rd annual show, "Denver Gem and Mineral Show"; Greater Denver Area Gem & Mineral Council; Denver Merchandise Mart, 451 E. 58th Ave. (I-25, Exit 215); Fri. 9-6, Sat. 10-6, Sun. 10-5; adults \$6, seniors and students \$4, children free with adult; runs concurrent with the Colorado Fossil Expo, exhibits, dealer displays, minerals, fossils, meteorites, gems, jewelry, demonstrations, speakers, "Minerals of Creede/Mineral County"; contact Emily Epstein,

(303) 233-2516; e-mail: emilye@sprynet.com; Web site: www.denvermineralshow.com

17-19--ENID, OKLAHOMA: Show; Enid Gem & Mineral Society; Oak Wood Mall, 4125 Owen K. Garriot (Hwy. 412); Fri. 10-6, Sat. 10-6, Sun. 12-5; contact Billy E. Wood, (580) 234-5344

17-19--HILLSBORO, OREGON: 30th annual show; Portland Regional Gem & Mineral Show Association; Washington County Fairgrounds, 873 NE 34th Ave., Hwy. 26 Shute Rd. exit; Fri. 10-6, Sat. 10-6, Sun. 10-5; contact Josh Heater, (971) 570-5456; e-mail: jfrankray@hotmail.com

18-19--CASTLE ROCK, WASHINGTON: Show; Southern Washington Mineralogical Society; Castle Rock Fairgrounds; Sat. 10-6, Sun. 10-4; spin table, gem dig, country store, magnetic sand, gold panning, rock cutting, silent auction, live auction Sat., demonstrations, door prizes, scholarship raffle, black light display, dealers; contact Fran Wolff, P.O. Box 1492, Kalama, WA 98625, (360) 560-2987; e-mail: fwolff@comcast.net

18-19--PASO ROBLES, CALIFORNIA: 19th annual show, "Rockhound Roundup"; Santa Lucia Rockhounds, Pioneer Park, 2010 Riverside Dr.; Sat. 10-5, Sun. 10-5; free admission; exhibits, raffle prizes, silent auction, demonstrations, youth activities, rocks, gems, minerals, fossils, meteorites, crystals, beads, carvings, lapidary equipment; contact Kim Patrick Noyes, 7343 El Camino Real #301, Atascadero, CA 93422, (805) 610-0603; e-mail: kimnoyes@gmail.com

18-19--REDWOOD CITY, CALIFORNIA: 44th annual show, "Harvest of Gems"; Sequoia Gem & Mineral Society; Community Activity Bldg., 1400 Roosevelt Ave.; Sat/ 10-5, Sun. 10-5; free admission; kids' activities, dealers, member displays, silent auction, earth science room; contact Carol Corden, P.O. Box 1245, Redwood City, CA 94064, (650) 248-7155; e-mail: ccorden@earthlink.net; Web site: <http://sgms.driftpine.com>

18-19--STAFFORD, TEXAS: Wholesale and retail show; Bead Jamboree; Stafford Convention Center, 10505 Cash Rd.; Sat. 10-5, Sun. 10-4; free admission; contact Robert Khork, 914 164th St. #449, Mill Creek, WA 98012, (206) 769-3987; e-mail: info@beadjamboree.com; Web site: www.beadjamboree.com

24-26--JACKSONVILLE, FLORIDA: Show; Jacksonville Gem & Mineral Society; Jacksonville Gem & Mineral Society; Morocco Temple, 3800 St. Johns Bluff Rd. S; Fri. 1-6, Sat. 10-6, Sun. 10-5; displays; contact Tom Frame, 3133 Chapelwood Ln., Jacksonville, FL 32216, (940) 737-9867; e-mail: Jgms_show@hotmail.com

24-26--SALT LAKE CITY, UTAH: Show, "Gem Faire"; Gem Faire Inc.; South Towne Exposition Center/Exhibit Hall 3, 9575 S. State St.; Fri. 12-7, Sat. 10-6, Sun. 10-5; weekend pass \$5; contact Yooy Nelson, (503) 252-8300; e-mail: info@gemfaire.com; Web site: www.gemfaire.com

24-26--SAN BERNARDINO, CALIFORNIA: Show, "OBMS Tail Gate Gem & Mineral Show"; Orange Belt Mineralogical Society; Western Regional Little League Ball Park, 6707 Little League Dr.; Fri. 9-dusk, Sat. 9-dusk, Sun. 9-dusk; free admission; rocks, jewelry, tools, lapidary display, education, kids' event, kids' club, silent auction, raffle, workshop; contact Shane Ripley, 205 W. Benedict #8, San Bernardino, CA 92408, (909) 557-3605; e-mail: OBMS_PR@yahoo.com; Web site: <http://obmsrocks.yolasite.com>



25-26--FRANKLIN, NEW JERSEY: 54th annual show; Franklin Mineral Museum; Franklin School, Washington Ave.; contact Lee Lowell, (973) 827-6671

25-26--MISSOULA, MONTANA: Show, "Big Sky Rocks"; Hellgate Mineral Society; Ruby's Reserve Street Inn, 4825 N. Reserve St.; Sat. 10-6, Sun. 10-5; contact Bob Riggs, 14 Holiday Ln., Missoula, MT 59801, (406) 543-3667

25-26--MONTEREY, CALIFORNIA: 51st show; Carmel Valley Gem & Mineral Club; Monterey Fairgrounds, 2004 Fairgrounds Rd.; Sat. 10-6, Sun. 10-5; adults \$3.50, senior \$2.50, children free with adult; exhibits, kids' stuff, grab bags, door prizes, wheel of fortune, demonstrations (fossil impressions, sphere making, silver jewelry making, grinding and polishing gemstones); contact Janis Rovetti, 1047 Roosevelt St., Monterey, CA 93940, (831) 657-1933; e-mail: janis12@sbcglobal.net; Web site: www.cvgms.org


25-26---SOUTH SIOUX CITY, NEBRASKA: 45th annual show; Siouxland Gem & Mineral Society; South Sioux City Senior Center, 1501 W. 29th St.; Sat. 9-6, Sun. 10-4; adults \$1.50, students (12 and older) 50 cents, children under 12 free; exhibits, four dealers, agates, rough and polished specimens, gems, beads, geodes, minerals, superb faceted jewelry, fossils, door prizes, spin the wheel, silent auction, displays, Siouxland dinosaur hunters' exhibits; contact Bob Powell, (712) 378-2775

GULF COAST GEM & MINERAL SOCIETY, INC.
P.O. Box 60781 Corpus Christi, TX 78466


MEMBER of	<div style="border: 1px solid black; padding: 5px; display: inline-block;"> American Federation of Mineralogical Societies </div>		<div style="border: 1px solid black; padding: 5px; display: inline-block;"> South Central Federation of Mineral Societies, Inc </div>		
	Meeting	Held the third Tuesday of each month at 6:30 pm at the museum of Science & History 1900 North Chaparral September through May, and at the Lapidary Shop 3933 Timon Blvd., Corpus Christi TX for June through August.			
	Membership Fees	Individual \$15.00 Couples \$20.00 Junior (under 17) \$5.00			
	2010 Officers	President: Kevin Schleicher Vice President: Kyle Hinkle Past President: Suzy Nick		Secretary: Suzy Nick Treasurer: Gene Schade gene@casadeoro.net	
	Board Appointees	Membership: Sandra Hinkle Education: Owen Hopkins Librarian: Linda Simpson Treasurer Gene Schade Show Chair: Jerrold Simpson		Show Publicity: Donna Grimes Shop coordinator: Mark Wolbrink Field Trip Coordinator: Mike McCraw Dealer Chair: Jerrold Simpson	
Standing Committies	Shop coordinator: Mark Wolbrink Field Trip Coordinator: Mike McCraw Federation Liaison: Linda Simpson Historiorn: Frances Marten Librarian Linda Simpson Communications: Suzy Nick Refreshment Hostess; Letty Rodriguez		Bulletin Editor; Art Worley Webmaster: Art Worley E-mail artleew@agates123.com Door Prizes; Gilbert Rodriguez		

Slabs & Cabs
 Art Worley
 2561 Raintree Trail
 Ingleside, TX 78362

Slabs & Cabs Awards
Small Bulletins
 2003 4th place SCFMS



AFMS
TROPHY



BULLETIN
AWARD
SCMS

PUBLICATION
 2nd 2002 2001 1st
 2001-4th place AFMS
 2000 9th place SCFMS
 1999-8th place SCFMS
 1999- 9th place (new editor) AFMS

Permission is granted to use any article in this publication, provided proper credit is given.